

# WHAT IS THE DOL REGISTERED APPRENTICE PROGRAM

Industry-driven model that combines on-the-job learning with job-related instruction leading to increasing levels of measurable skill attainment and wages.

## What are the Components of Apprenticeship?



### Employer Involvement

Employers are the foundation of every apprenticeship program.



### Structured On-the-Job Training

Apprentices receive on-the-job training from an experienced mentor for typically not less than one year.



### Related Training and Instruction

Apprenticeships combine on-the-job learning with technical education at community colleges, technical schools, or apprenticeship training schools – or provided on-line or at the job site.



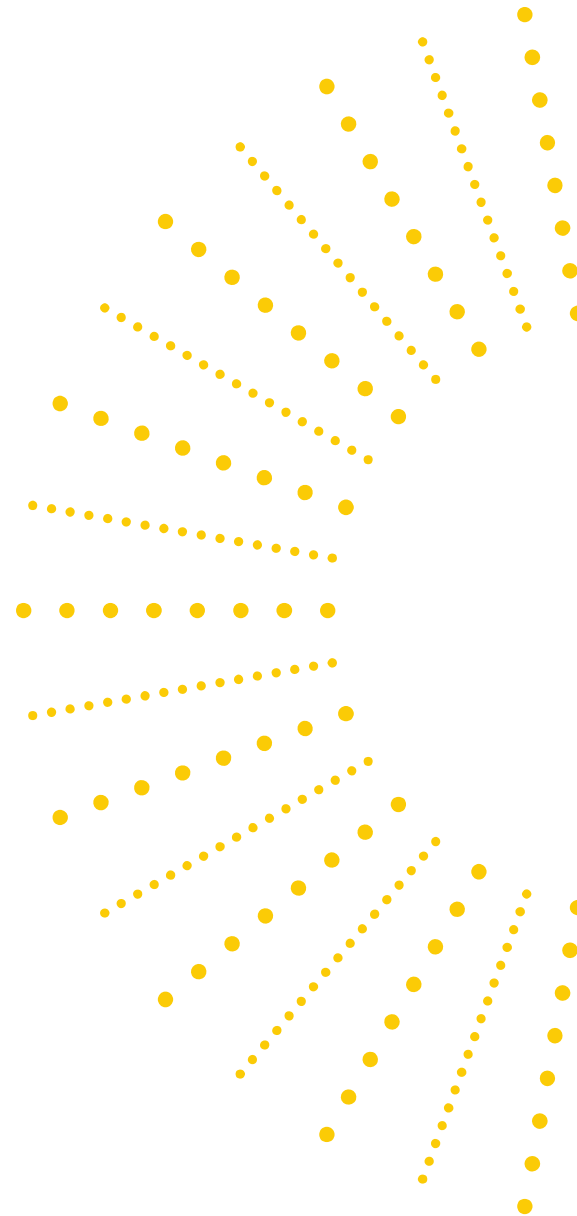
### Rewards for Skill Gains

Apprentices receive increases in wages as they gain higher level skills.



### National Occupational Credential

Apprenticeship programs result in a nationally-recognized credential – a 100% guarantee to employers that apprentices are fully qualified for the job.

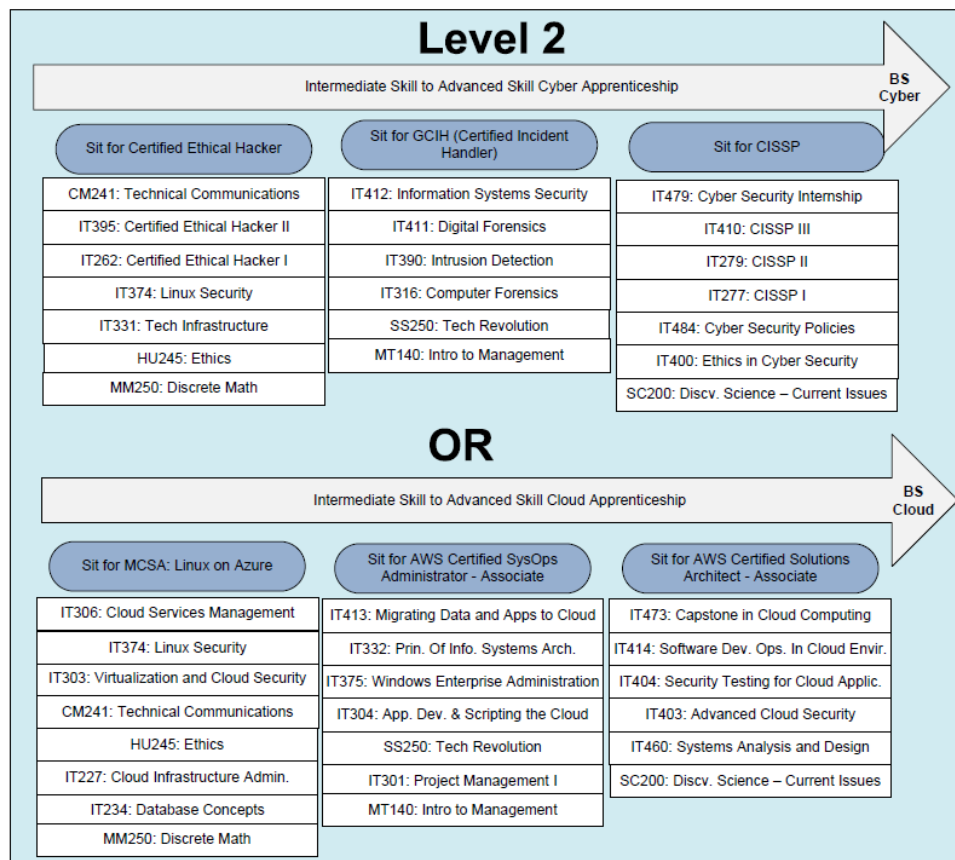
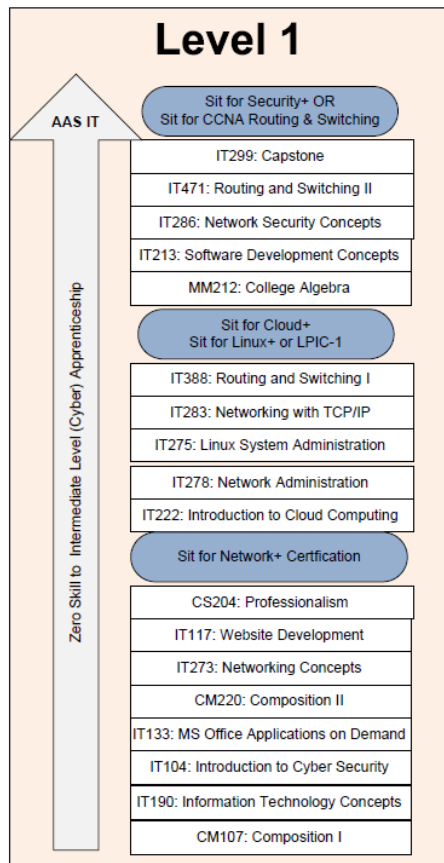


# BENEFITS

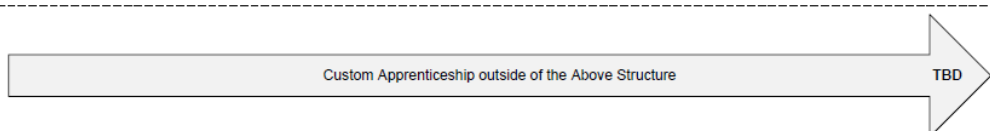


# Apprenticeship: Academic Structure

Two levels of Apprenticeships. Employers would have the option of signing on to level 1, level 2, or both.



**KEY**  
Summative Assessment/Advancement in Pay



Multiple Level 2 options will be created. BS Cyber and BS Cloud Computing will be two pathways.

Other pathway will also be created based on Industry and Employer feedback.

Custom pathways may also be created.

# Apprenticeship: Cybersecurity Credentials

*Prepares Apprentices to sit for industry recognized credentials that meet the qualifications of DOD 8570.*

Approved Baseline Certifications		
<p>IAT Level I</p> <p>A+ CE CCNA-Security Network+ CE SSCP</p>	<p>IAT Level II</p> <p>CCNA Security CySA+ ** GICSP GSEC Security+ CE SSCP</p>	<p>IAT Level III</p> <p>CASP CE CCNP Security CISA CISSP (or Associate) GCED GCIH</p>
<p>IAM Level I</p> <p>CAP GSLC Security+ CE</p>	<p>IAM Level II</p> <p>CAP CASP CE CISM CISSP (or Associate) GSLC</p>	<p>IAM Level III</p> <p>CISM CISSP (or Associate) GSLC</p>
<p>IASAE I</p> <p>CASP CE CISSP (or Associate) CSSLP</p>	<p>IASAE II</p> <p>CASP CE CISSP (or Associate) CSSLP</p>	<p>IASAE III</p> <p>CISSP-ISSAP CISSP-ISSEP</p>
<p>CSSP Analyst</p> <p>CEH CFR CySA+ ** GCIH GICSP SCYBER</p>	<p>CSSP Infrastructure Support</p> <p>CEH CySA+ ** GICSP SSCP</p>	<p>CSSP Incident Responder</p> <p>CEH CFR CySA+ ** GCFA GCIH SCYBER</p>
<p>CSSP Auditor</p> <p>CEH CySA+ ** CISA GSNA</p>	<p>CSSP Manager</p> <p>CISM CISSP-ISSMP</p>	

Yellow Highlight =  
Level 1 Apprenticeship

Blue Highlight = Level  
2 Apprenticeship  
(cybersecurity)