



# Industry Certification and Education Performance Data System – Updated Project Results

February 2021

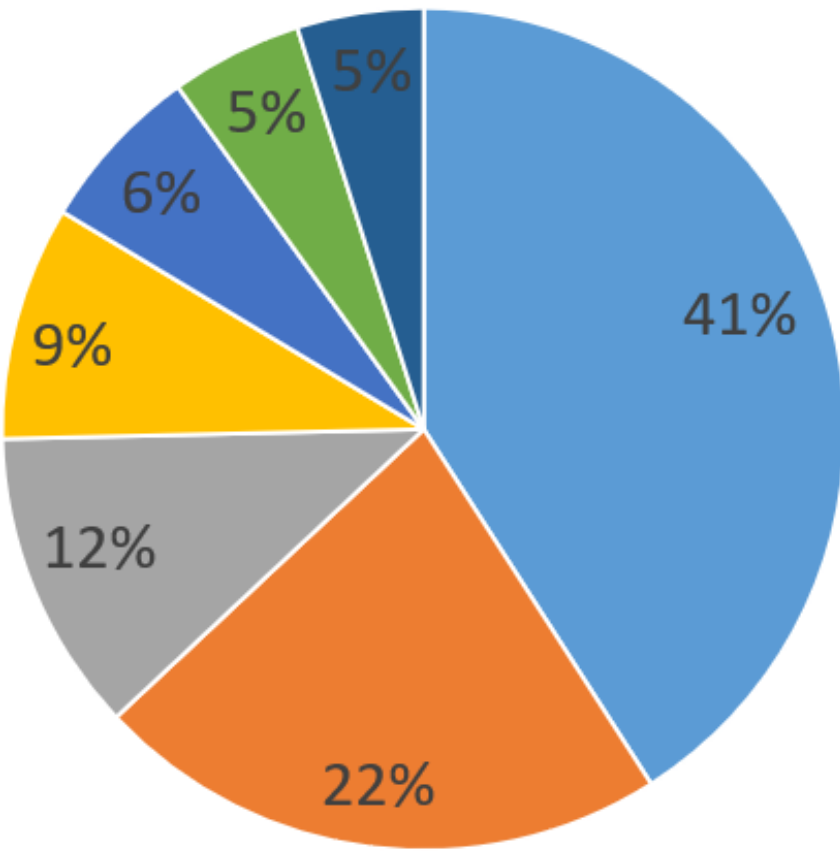
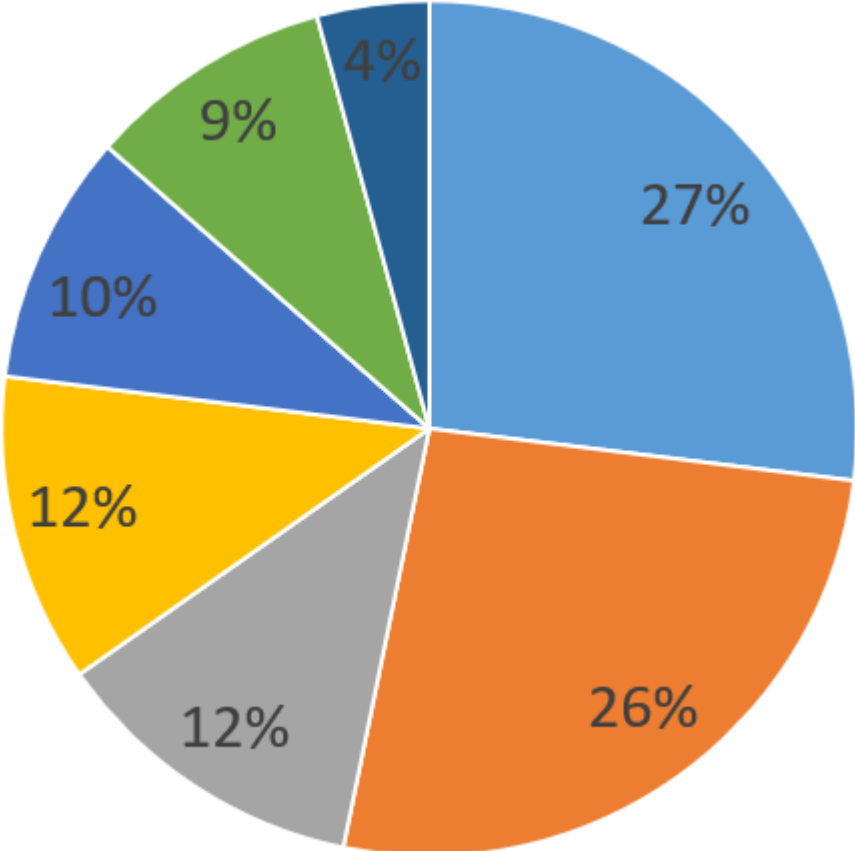
# Disclaimer

---

Any opinions and conclusions expressed herein are those of the authors and do not reflect the views of the U.S. Census Bureau.

The Census Bureau's Disclosure Review Board has approved all statistics and estimates presented today for public release under approval numbers CBDRB\_FY2020-CES010-007 and CBDRB-FY2020-CES010-012.

# Industry Employment Before and After Last Credential



- Manufacturing
- Administrative & Support/Waste Management
- Retail Trade
- Transportation & Warehousing
- Other
- Not specified
- Accommodation & Food Services

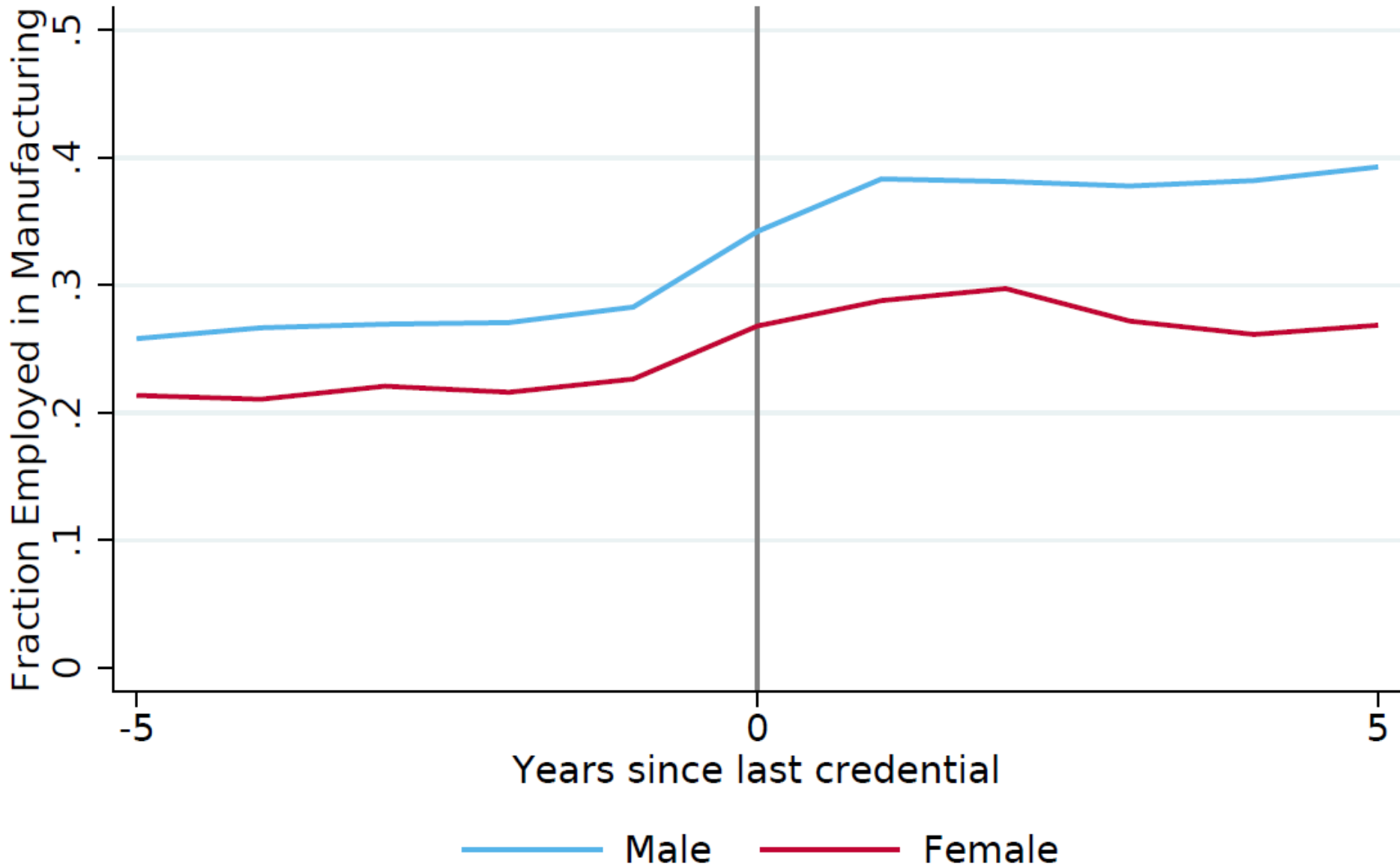
# Average wages since last manufacturing credential

## By Gender and Industry



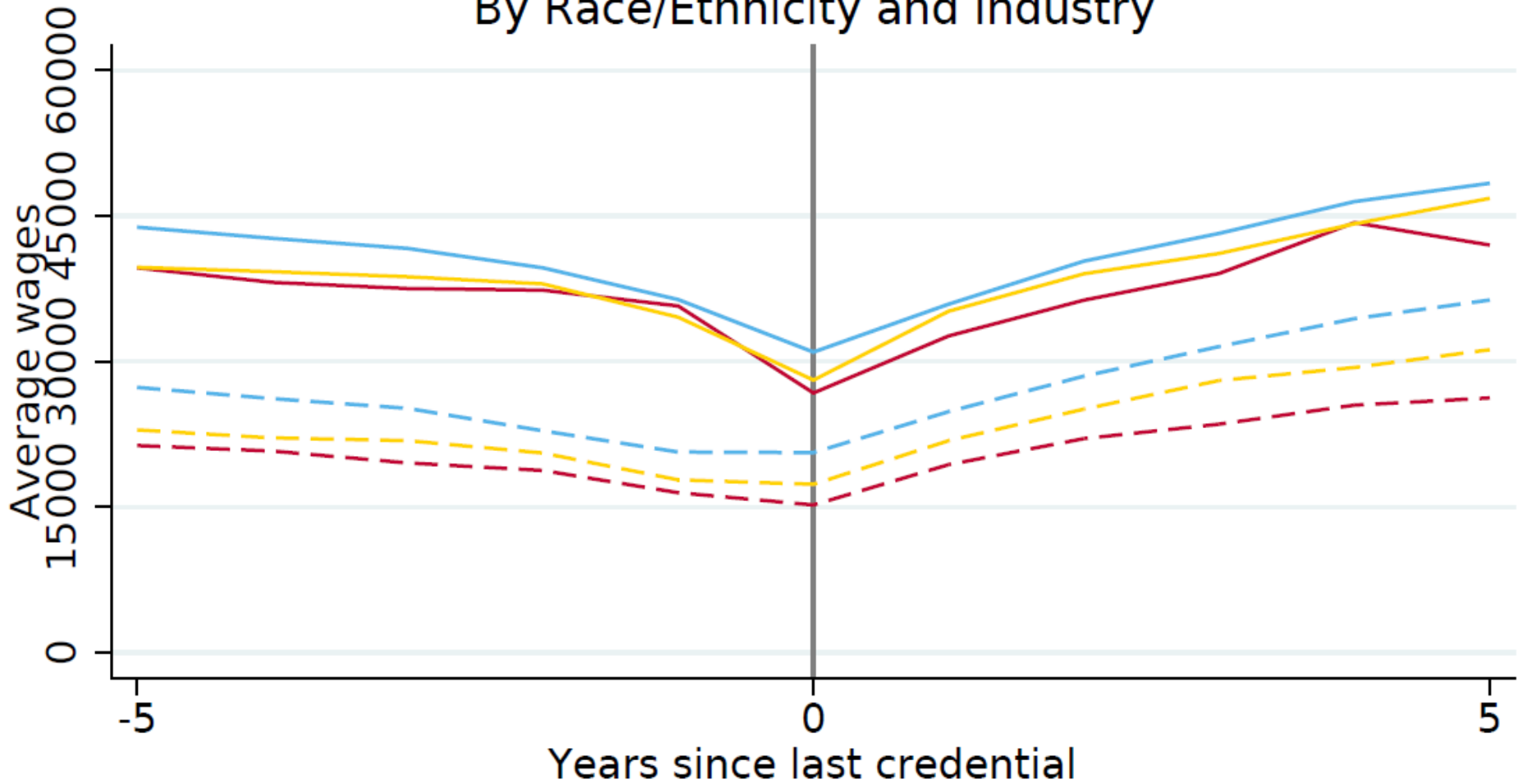
Male in Manufacturing      Female in Manufacturing  
Male not in Manufacturing      Female not in Manufacturing

# Probability of Employment in Manufacturing By Gender



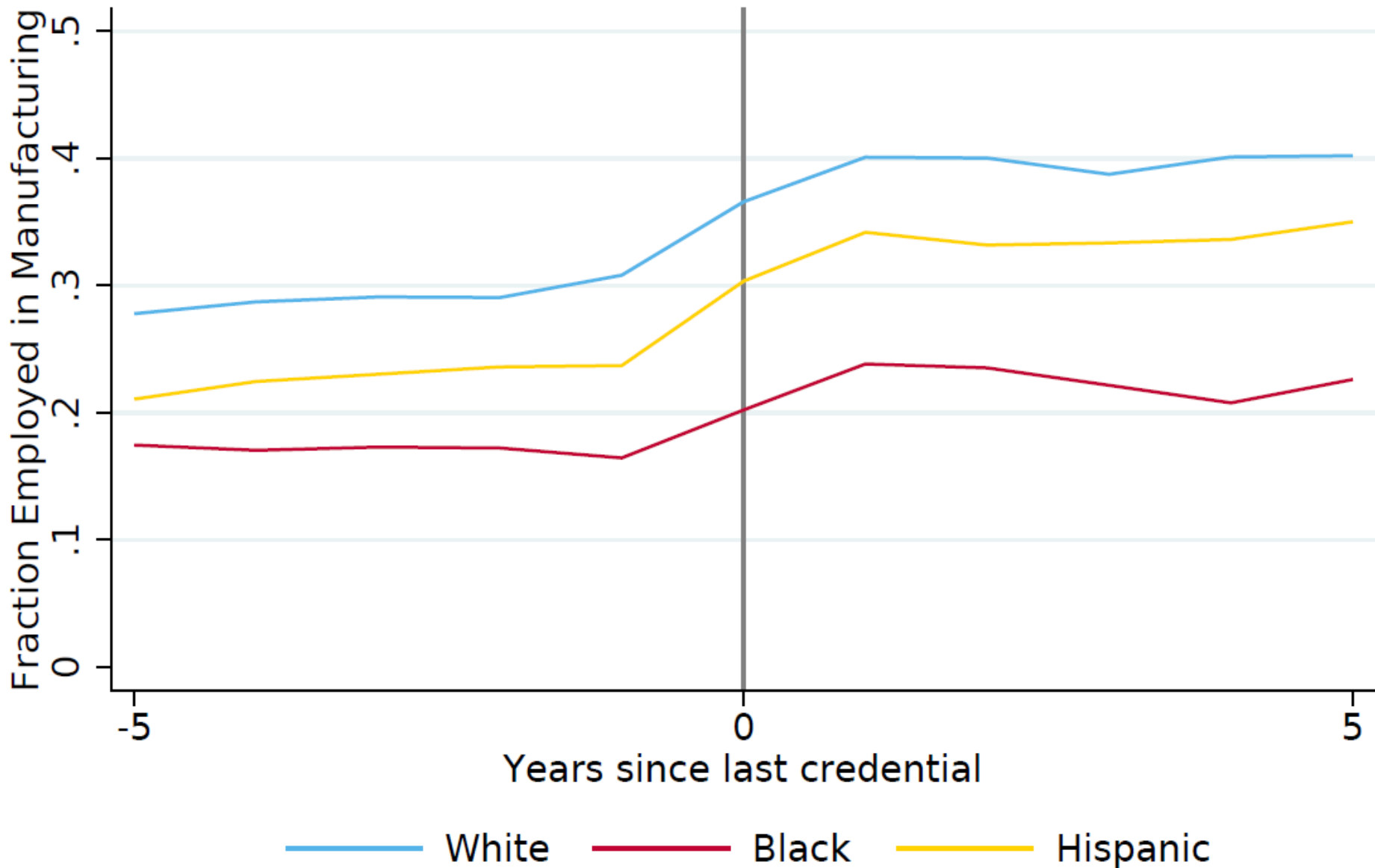
# Average wages since last manufacturing credential

## By Race/Ethnicity and Industry



- White in Manufacturing
- Black in Manufacturing
- Hispanic in Manufacturing
- White not in Manufacturing
- Black not in Manufacturing
- Hispanic not in Manufacturing

# Probability of Employment in Manufacturing By Race/Ethnicity



# Next Steps – U.S. Census Bureau

---

- Analyzing geographical impacts of wages
- Understanding types and sizes of employers for this population
- Assessing retention in industry over time
- Defining a control group of individuals with and without credentials
- Exploring demographic trends related to race/ethnicity and gender
- Writing a research paper on pilot findings

**All matching algorithms to Census and IRS data sources are now programmed and can be quickly used for other industry credential providers and has been tested with healthcare credentials**



# Questions

---

## Contact Information:

Vanessa Brown  
Deputy Chief Data Officer, NSC  
[vbrown@studentclearinghouse.org](mailto:vbrown@studentclearinghouse.org)  
703-742-3244

Gardner Carrick  
Vice President, Strategic Initiatives, NAM/MI  
[gcarrick@nam.org](mailto:gcarrick@nam.org)  
202-637-3491

Margaret Jones  
Senior Economist, Census Bureau  
[margaret.r.jones@census.gov](mailto:margaret.r.jones@census.gov)  
301-763-3303