



Standards Council of Canada
Conseil canadien des normes

national **standards** system

Involvement in TCs ISO & IEC

PASC 2007 04 27
Michel M. Bourassa
Director Standards SCC

Canada 



A parting note

- **While gathering data for the charts in this presentation, the information in the next slide revealed itself.**
- **A relevant message is in there somewhere, but I am not sure what it is.**
- **I'll leave you to puzzle over it!**



SOUTH AFRICAN BUREAU OF STANDARDS



Rest of world 32%
($< 3\%$ per country)

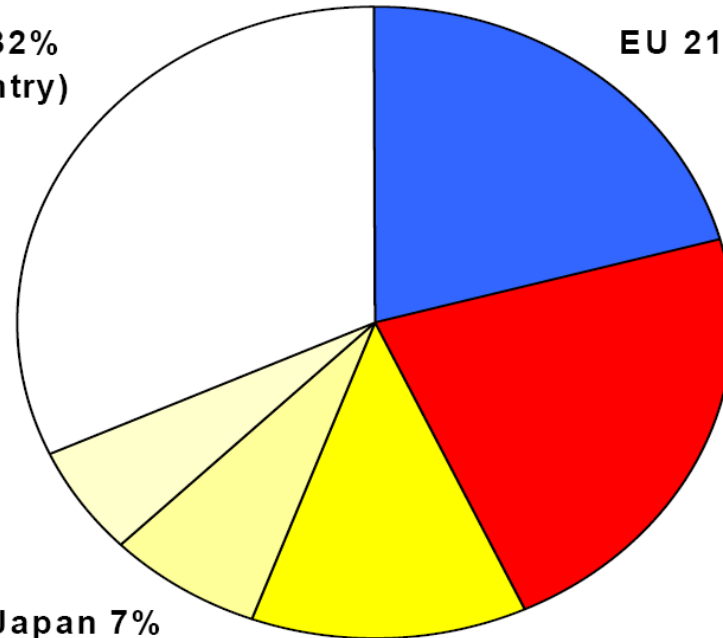
EU 21%

US 22%

India 6%

Japan 7%

China 12%

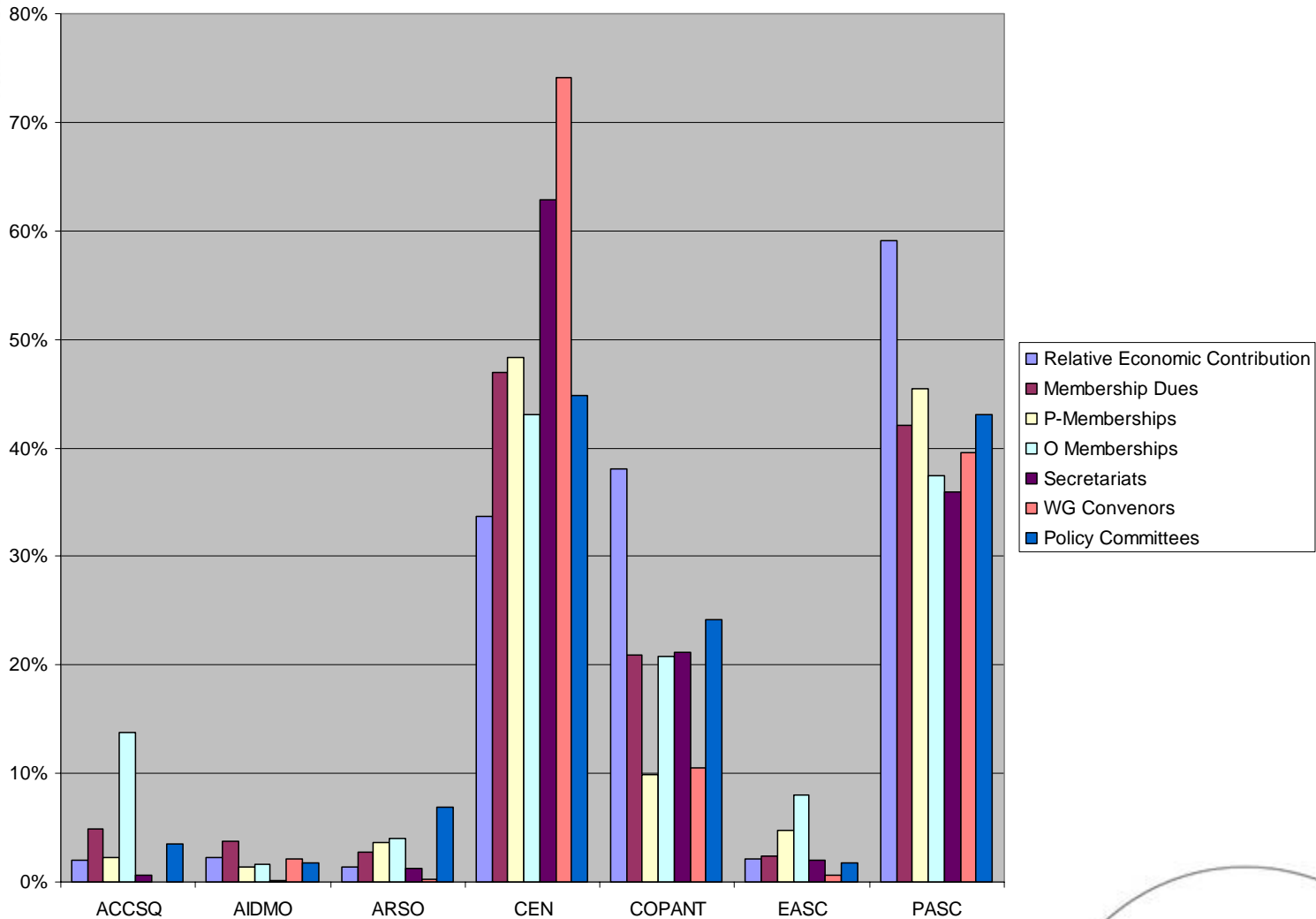


Contributions to Output 2004



Standards Council of Canada
Conseil canadien des normes

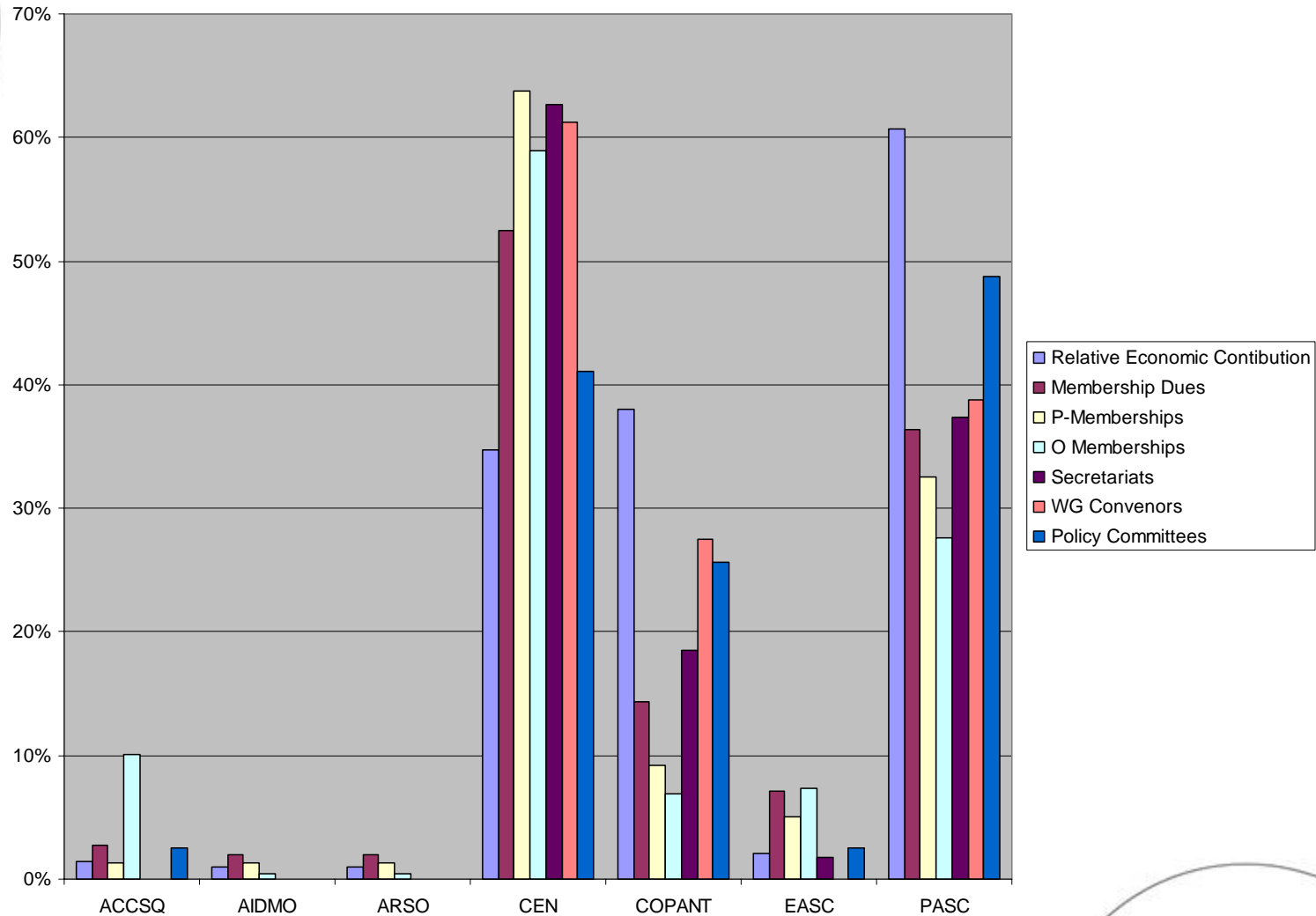
ISO Regional Comparison



STANDARDS IN FOCUS



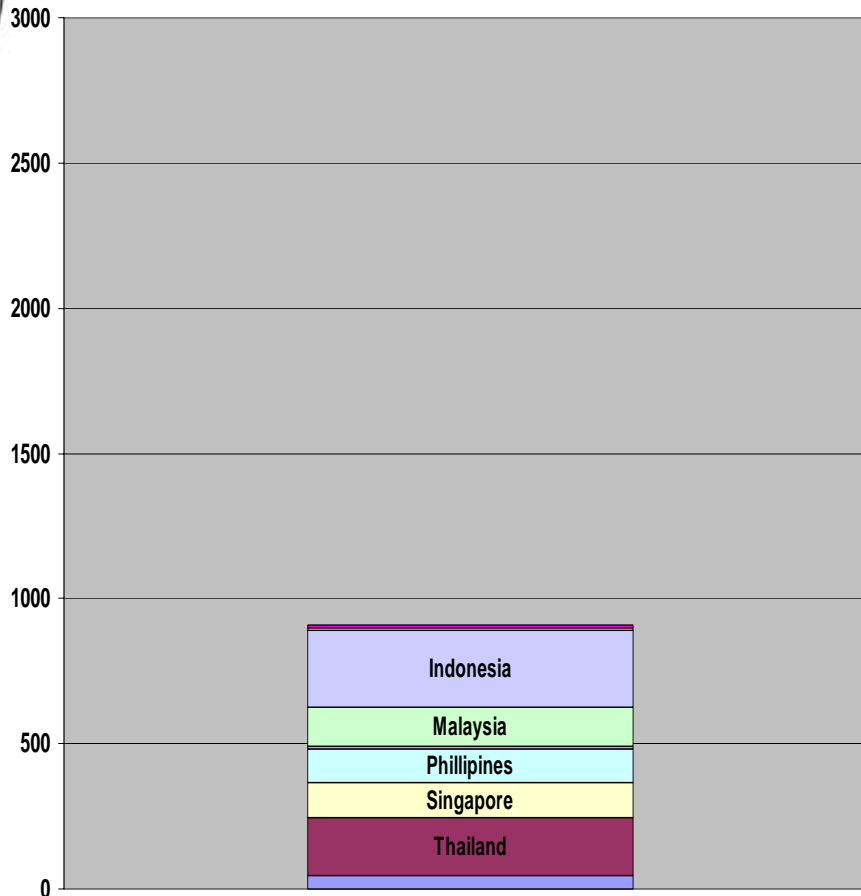
IEC Regional Comparison



STANDARDS IN FOCUS



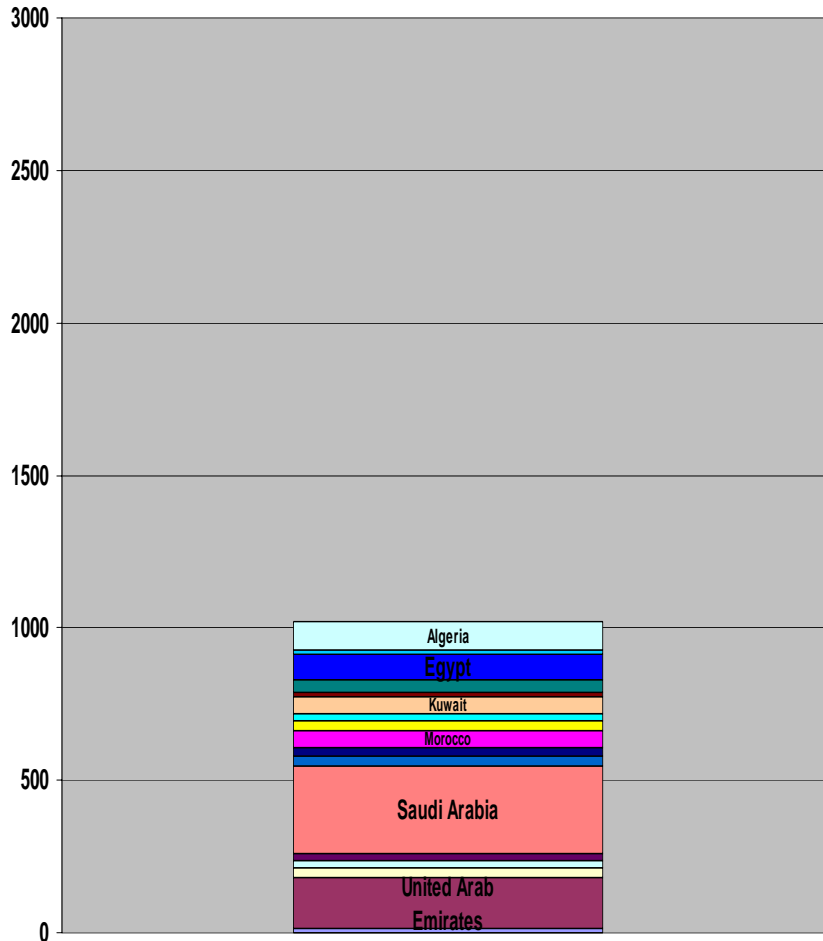
ACCSQ ISO Economic Contribution



Brunei Darussalam (CPRU)	1%
Cambodia (ISC)	1%
Indonesia (BSN)	29%
Lao People's Democratic Republic (DISM)	0%
Malaysia (DSM)	15%
Myanmar (MSTRD)	1%
Philippines (BPS)	13%
Singapore (SPRING SG)	13%
Thailand (TISI)	22%
Viet Nam (TCVN)	5%



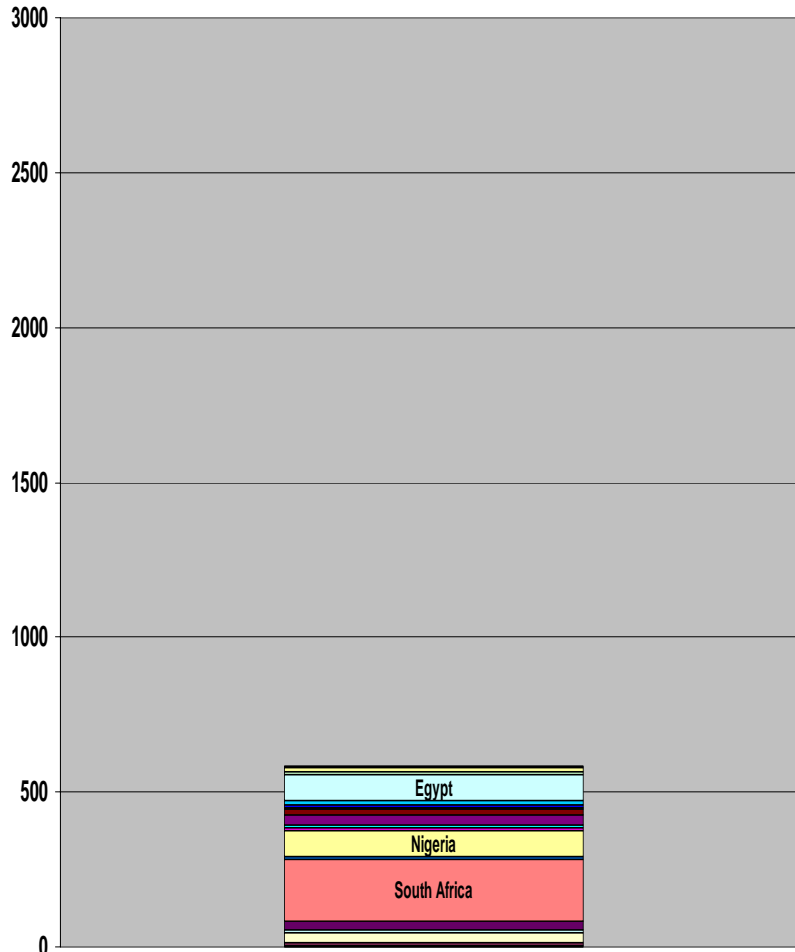
AIDMO ISO Economic Contribution



Algeria (IANOR)	9.05%
Bahrain (BSMD)	1.19%
Egypt (EOS)	8.29%
Iraq (COSQC)	3.99%
Jordan (JISM)	1.38%
Kuwait (KOWSMD)	5.72%
Lebanon (LIBNOR)	1.93%
Libyan Arab Jamahiriya (LNCMSM)	3.42%
Morocco (SNIMA)	5.57%
Oman (DGSM)	2.67%
Palestine (PSI)	0.00%
Qatar (QS)	3.02%
Saudi Arabia (SASO)	28.08%
Sudan (SSMO)	2.50%
Syria (SASMO)	2.38%
Tunisia (INNORPI)	3.23%
United Arab Emirates (ESMA)	16.09%
Yemen (YSMO)	1.49%



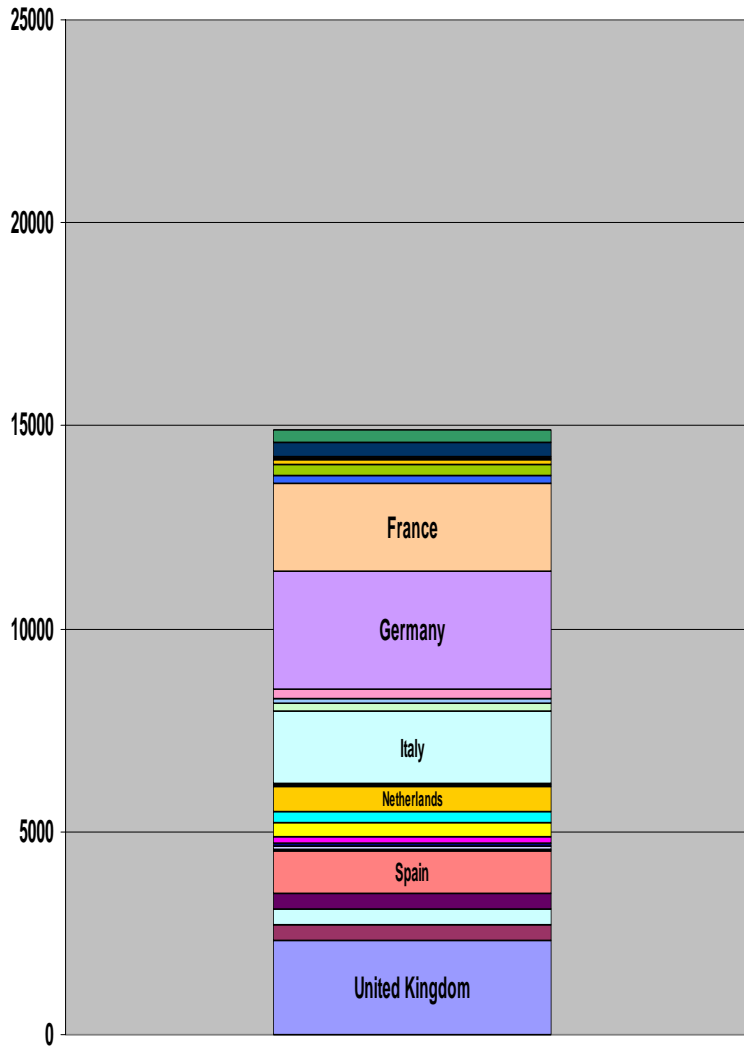
ARSO ISO Economic Contribution



Burkina Faso (FASONORM)	0.99%
Cameroon (CDNQ)	2.79%
Congo, The Democratic Rep. of the (OCC)	1.38%
Egypt (EOS)	14.42%
Ethiopia (QSAE)	2.27%
Ghana (GSB)	1.74%
Guinea (INNM)	0.62%
Kenya (KEBS)	2.97%
Libyan Arab Jamahiriya (LNCMSM)	5.94%
Madagascar (BNM)	0.87%
Malawi (MBS)	0.37%
Mauritius (MSB)	1.22%
Nigeria (SON)	14.22%
Rwanda (RBS)	0.34%
Senegal (ASN)	1.46%
South Africa (SABS)	34.21%
Sudan (SSMO)	4.35%
Tanzania, United Republic of (TBS)	2.24%
Tunisia (INNORPI)	5.62%
Uganda (UNBS)	1.45%
Zimbabwe (SAZ)	0.54%



CEN ISO Economic Contribution



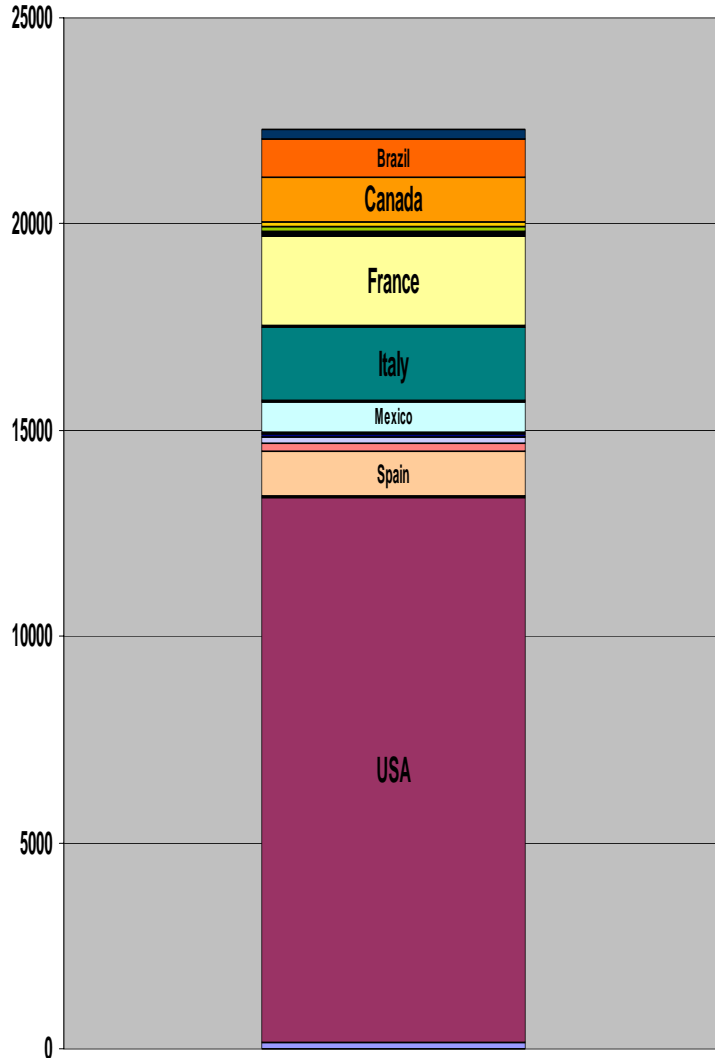
Albania (DPS)	0.00%
Austria (ON)	2.07%
Belgium (IBN)	2.47%
Bulgaria (BDS)	0.19%
CEN Affiliates	
Croatia (HZN)	0.25%
Cyprus (CYS)	0.11%
Czech Republic (CNI)	0.80%
Denmark (DS)	1.72%
Estonia (EVS)	0.09%
Finland (SFS)	1.32%
France (AFNOR)	14.44%
Germany (DIN)	19.38%
Greece (ELOT)	1.56%
Hungary (MSZT)	0.76%
Iceland (IST)	0.09%
Ireland (NSAI)	1.36%
Italy (UNI)	11.94%
Latvia (LVS)	0.11%
Lithuania (LST)	0.20%
Luxembourg (SEE)	0.23%

Malta (MSA)	0.04%
Netherlands (NEN)	4.11%
Norway (SN)	1.75%
Poland (PKN)	2.26%
Portugal (IPQ)	1.18%
Romania (ASRO)	0.53%
Slovakia (SUTN)	0.31%
Slovenia (SIST)	0.25%
Spain (AENOR)	7.25%
Sweden (SIS)	2.49%
Switzerland (SNV)	2.59%
The former Yugoslav Republic of Macedonia (ISRM)	0.04%
Turkey (TSE)	2.40%
United Kingdom (BSI)	15.70%

STANDARDS IN FOCUS



COPANT ISO Economic Contribution



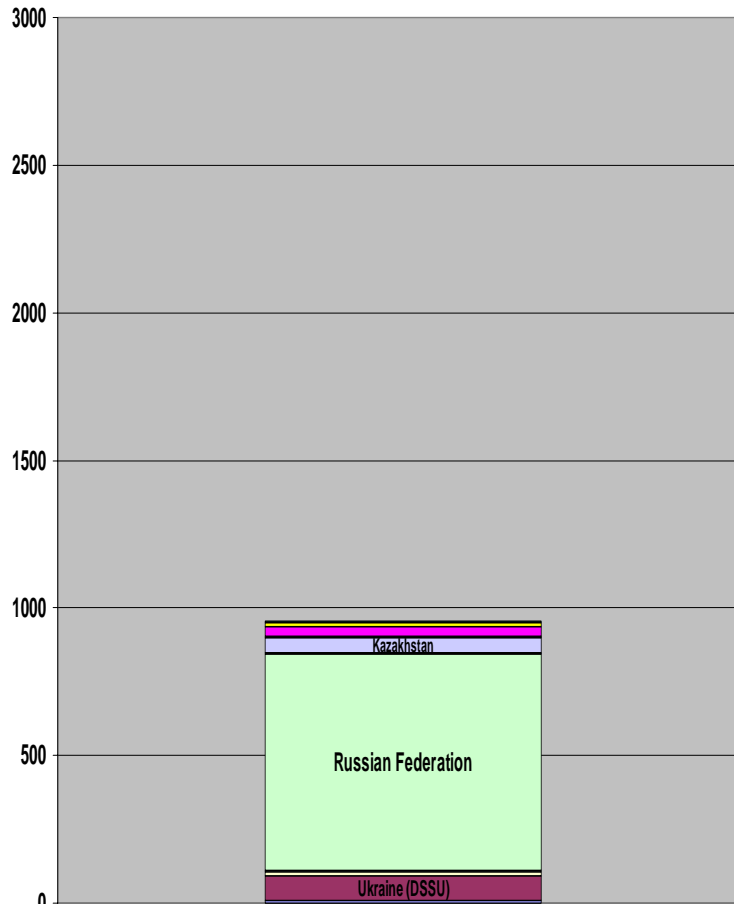
Argentina (IRAM)	0.94%
Barbados (BNSI)	0.01%
Bolivia (IBNORCA)	0.05%
Brazil (ABNT)	4.23%
Canada (SCC)	4.89%
Chile (INN)	0.50%
Colombia (ICONTEC)	0.47%
Costa Rica (INTECO)	0.09%
Cuba (NC)	0.18%
Dominican Republic (DIGENOR)	0.09%
Ecuador (INEN)	0.15%
El Salvador (CONACYT)	0.08%
France (AFNOR)	9.66%
Grenada (GDBS)	0.00%
Guatemala (COGUANOR)	0.14%
Guyana (GNBS)	0.00%
Honduras (COHCIT)	0.04%
Italy (UNI)	7.99%
Jamaica (JBS)	0.04%

Mexico (DGN)	3.33%
Nicaragua (DTNM)	0.02%
Panama (COPANIT)	0.07%
Paraguay (INTN)	0.03%
Peru (INDECOPI)	0.34%
Portugal (IPQ)	0.79%
Saint Lucia (SLBS)	0.00%
South Africa (SABS)	0.90%
Spain (AENOR)	4.85%
Trinidad and Tobago (TTBS)	0.07%
Uruguay (UNIT)	0.06%
USA (ANSI)	59.30%
Venezuela (FONDONORMA)	0.66%

STANDARDS IN FOCUS



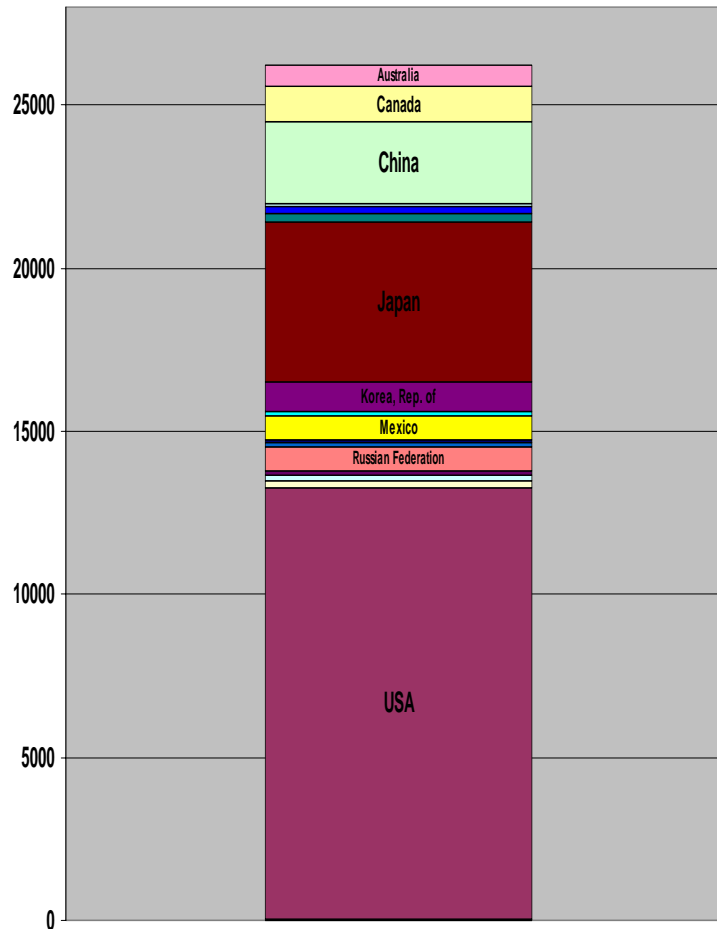
EASC ISO Economic Contribution



Armenia (SARM)	0.69%
Azerbaijan (AZSTAND)	1.47%
Belarus (BELST)	2.99%
Georgia (GEOSTM)	0.55%
Kazakhstan (KAZMEMST)	5.51%
Kyrgyzstan (KYRGYZST)	0.23%
Moldova, Republic of (MOLDST)	0.27%
Russian Federation (GOST R)	76.72%
Tajikistan (TJKSTN)	0.22%
Turkmenistan (MSST)	1.69%
Ukraine (DSSU)	8.53%
Uzbekistan (UZSTANDARD)	1.13%



PASC ISO Economic Contribution



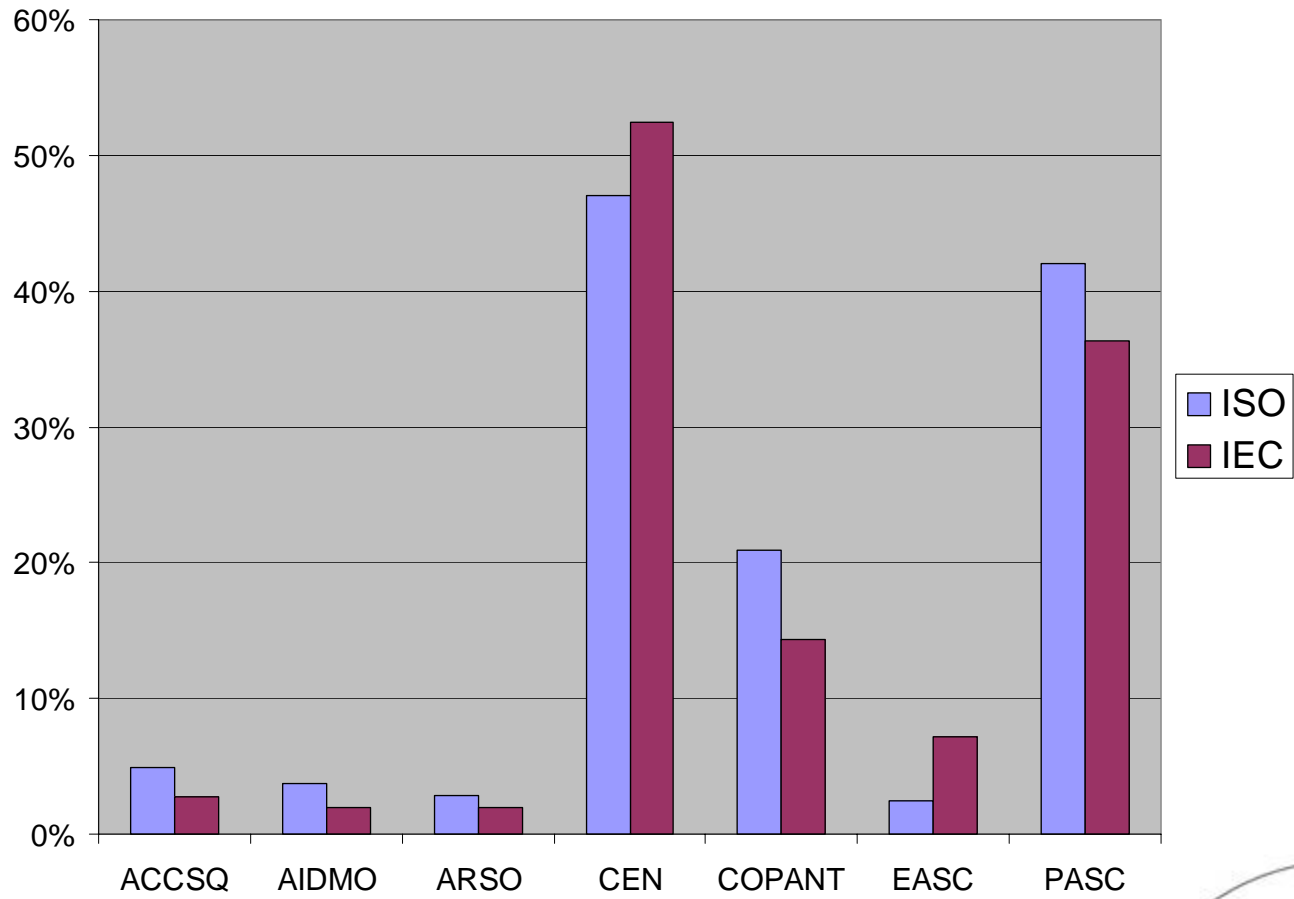
Australia (SA)	2.46%
Brunei Darussalam	0.04%
Canada (SCC)	4.15%
China (SAC)	9.57%
Colombia (ICONTEC)	0.40%
Fiji (FTSQCO)	0.01%
Hong Kong, China (ITCHKSAR)	0.71%
Indonesia (BSN)	1.01%
Japan (JISC)	18.72%
Korea, Rep. of (KATS)	3.42%
Malaysia (DSM)	0.50%
Mexico (DGN)	2.83%
Mongolia (MASM)	0.01%
New Zealand (SNZ)	0.38%

Papua New Guinea (NISIT)	0.02%
Philippines (BPS)	0.45%
Russian Federation (GOST R)	2.79%
Singapore (SPRING SG)	0.46%
South Africa (SABS)	0.76%
Thailand (TISI)	0.75%
USA (ANSI)	50.39%
Viet Nam (TCVN)	0.18%

STANDARDS IN FOCUS



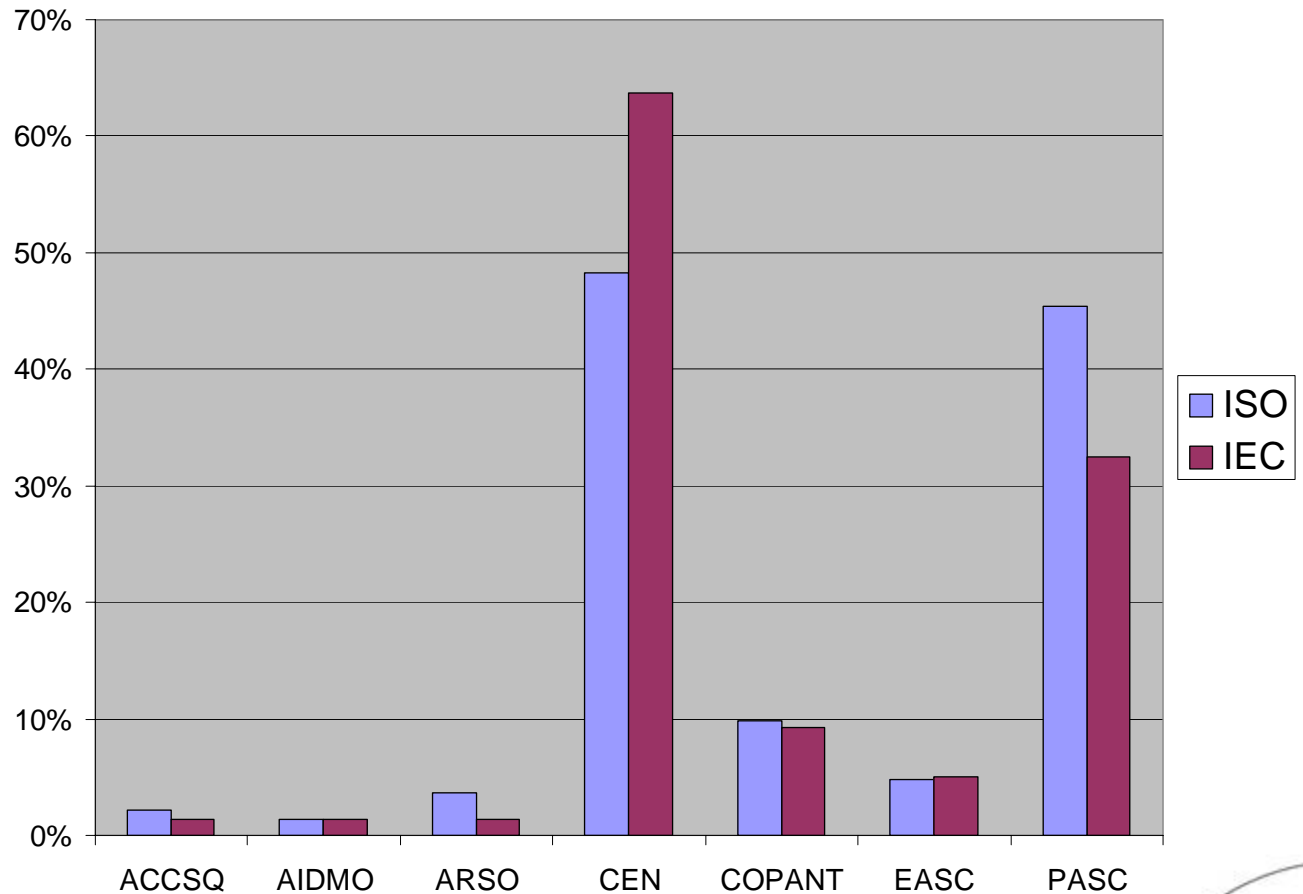
ISO/IEC Membership Dues



STANDARDS IN FOCUS



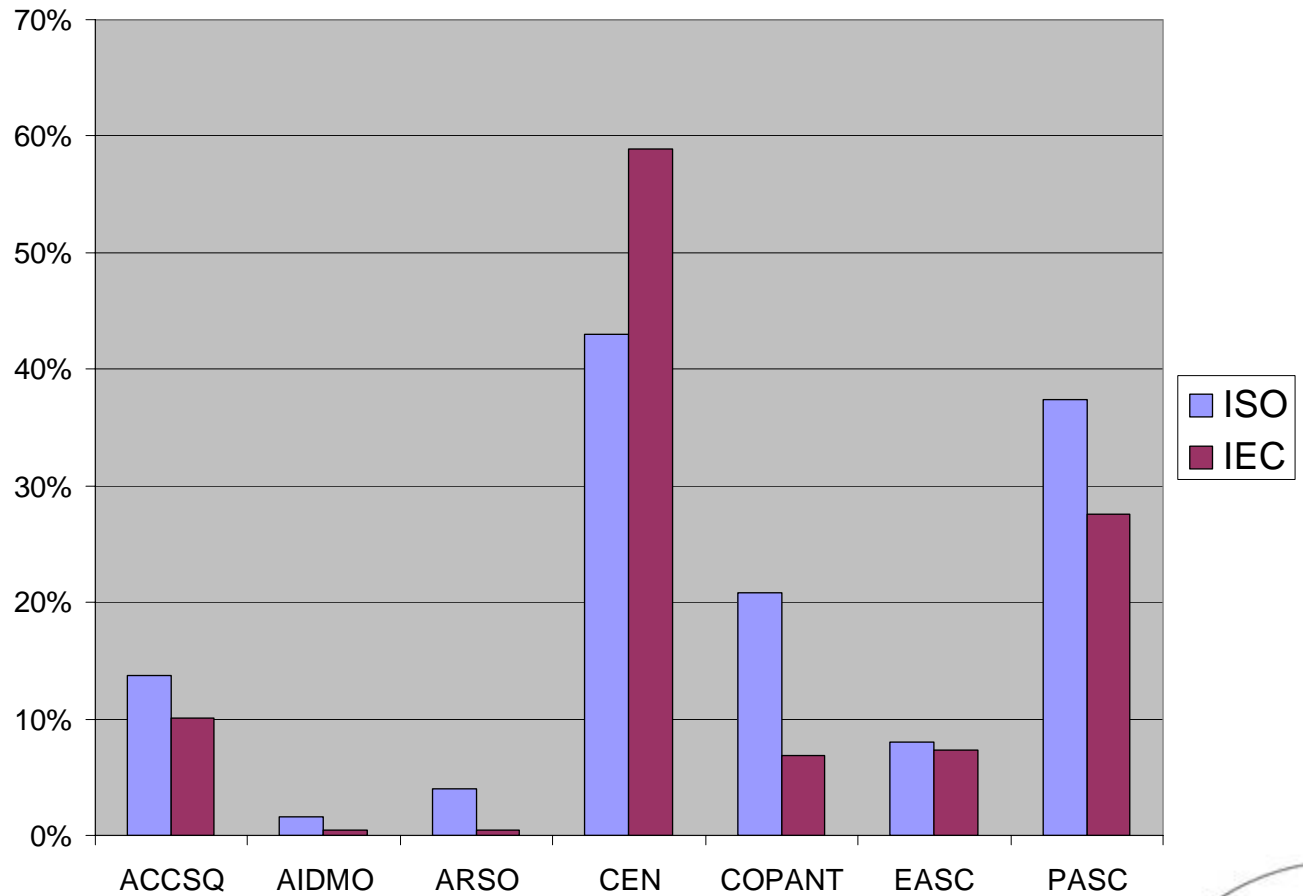
ISO/IEC P Memberships



STANDARDS IN FOCUS



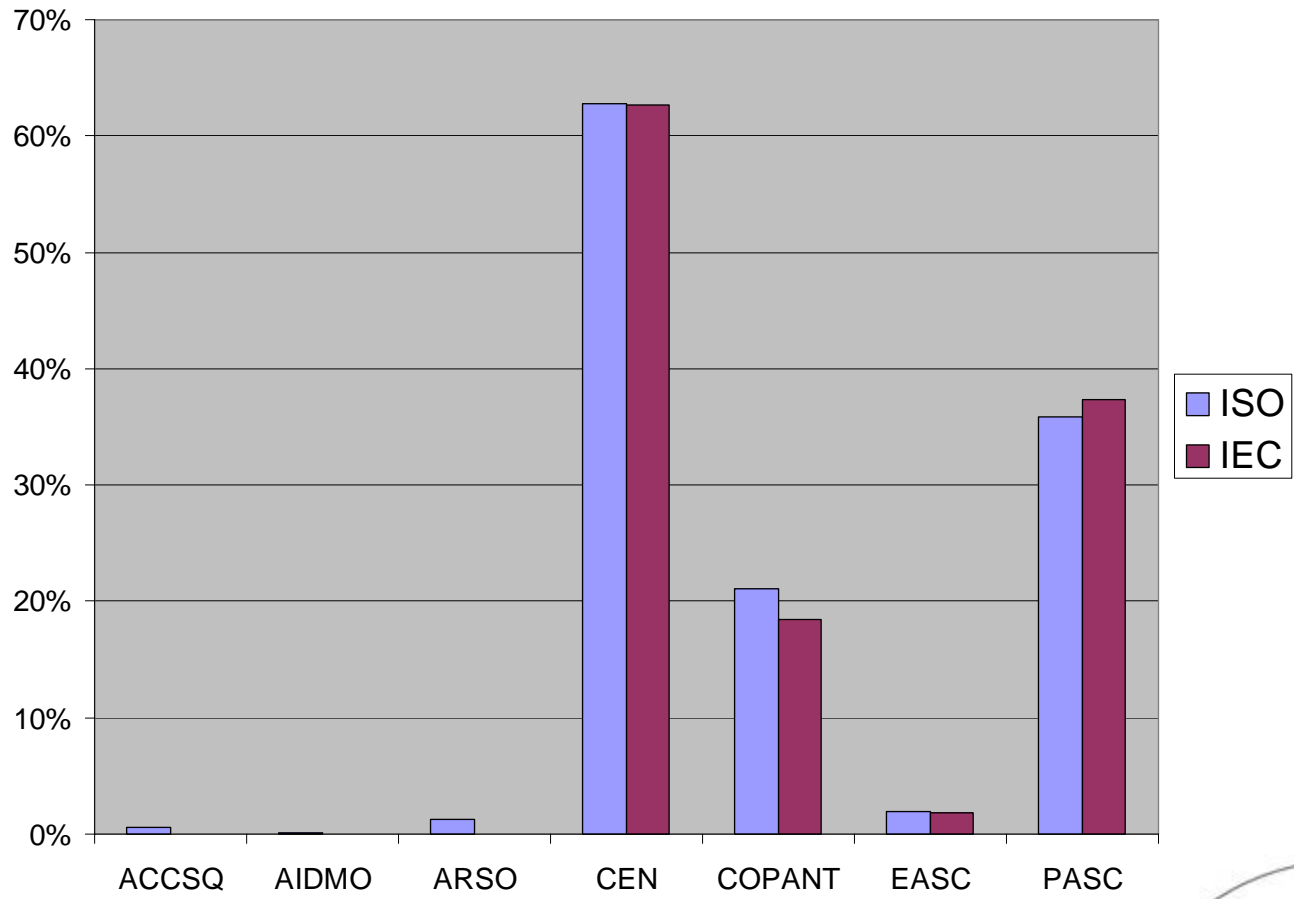
ISO/IEC O Memberships



STANDARDS IN FOCUS



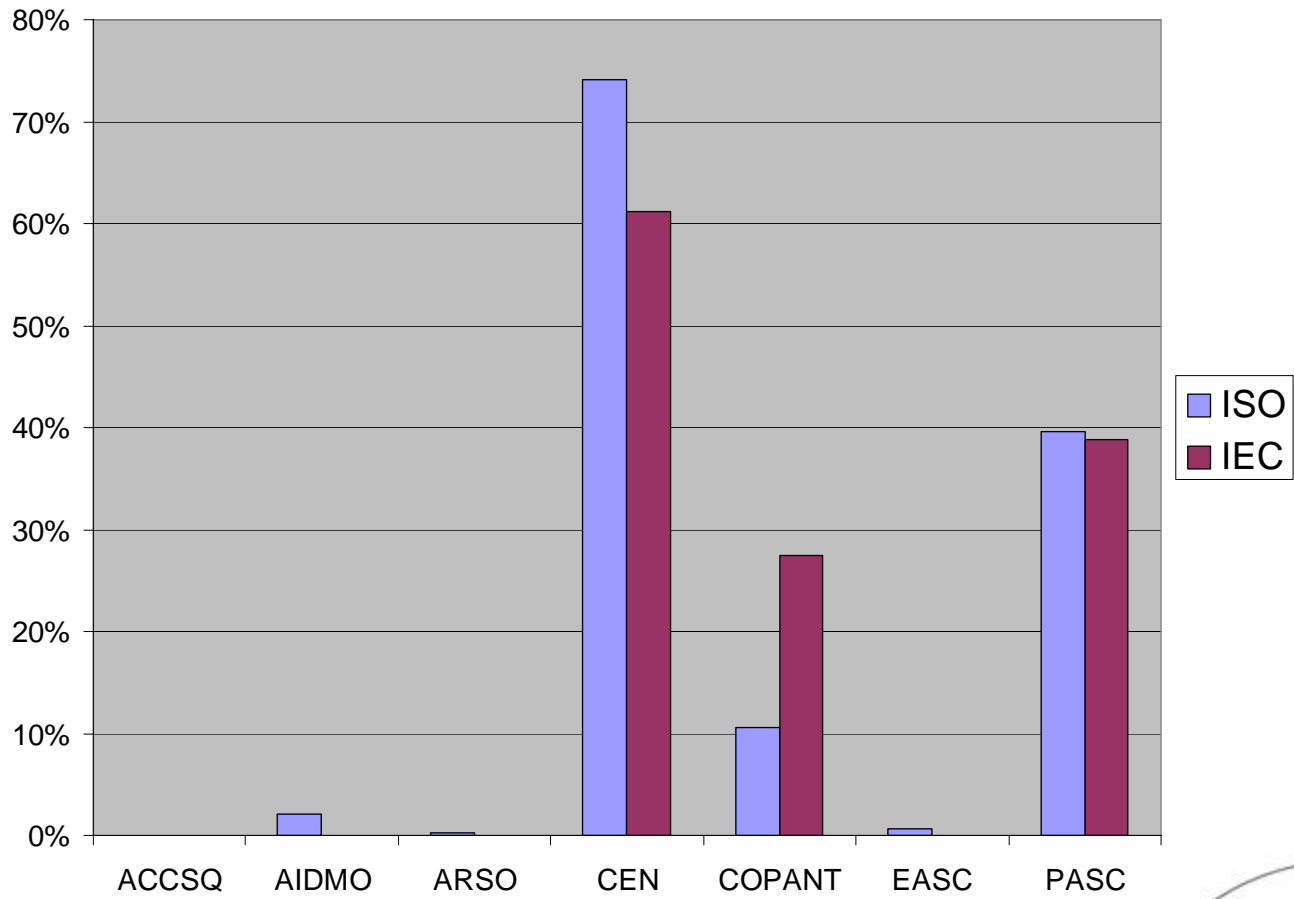
ISO/IEC Secretariat



STANDARDS IN FOCUS



ISO/IEC WG Convenor

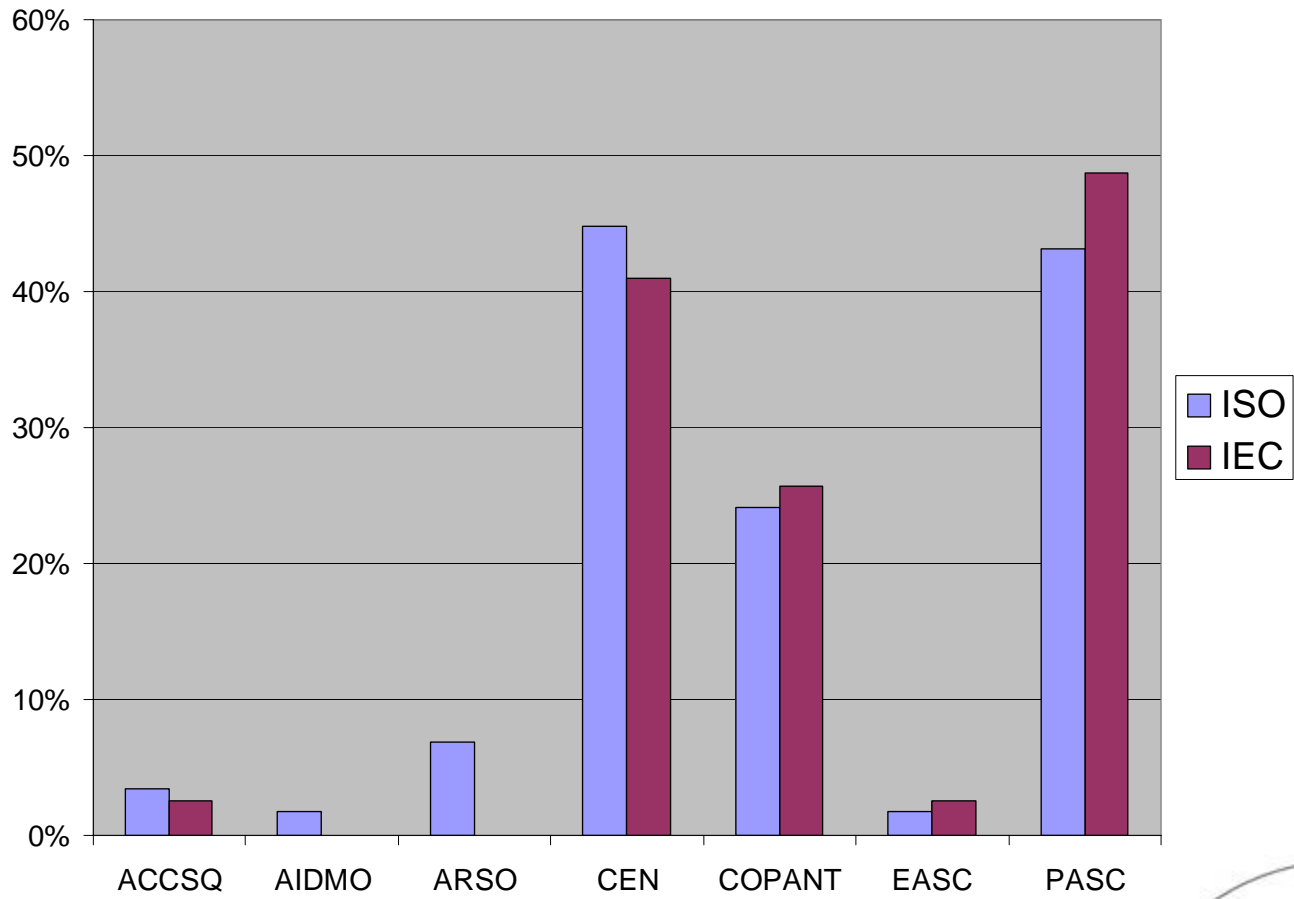


STANDARDS IN FOCUS



Standards Council of Canada
Conseil canadien des normes

ISO/IEC Policy Committees

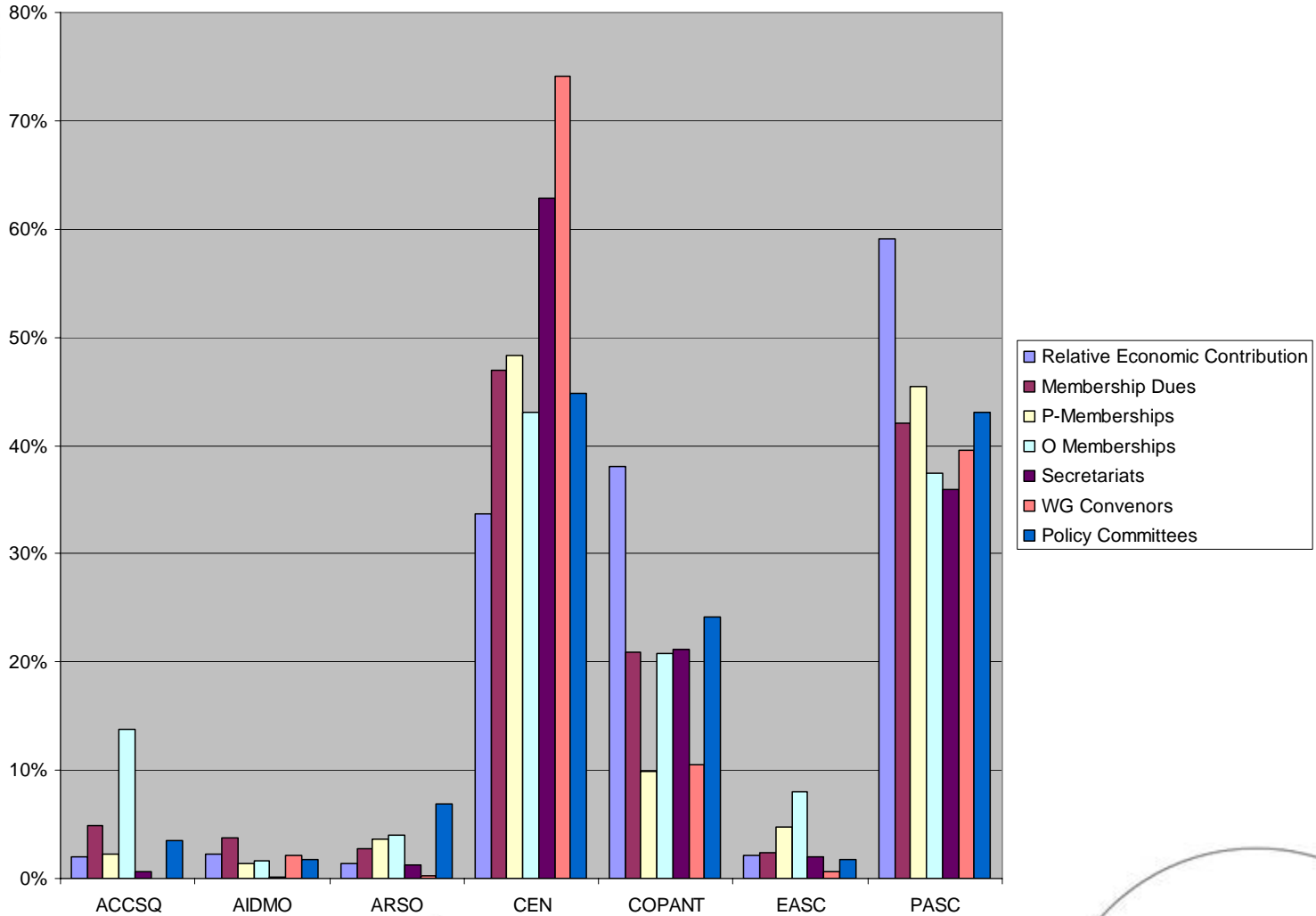


STANDARDS IN FOCUS



Standards Council of Canada
Conseil canadien des normes

ISO Regional Comparison

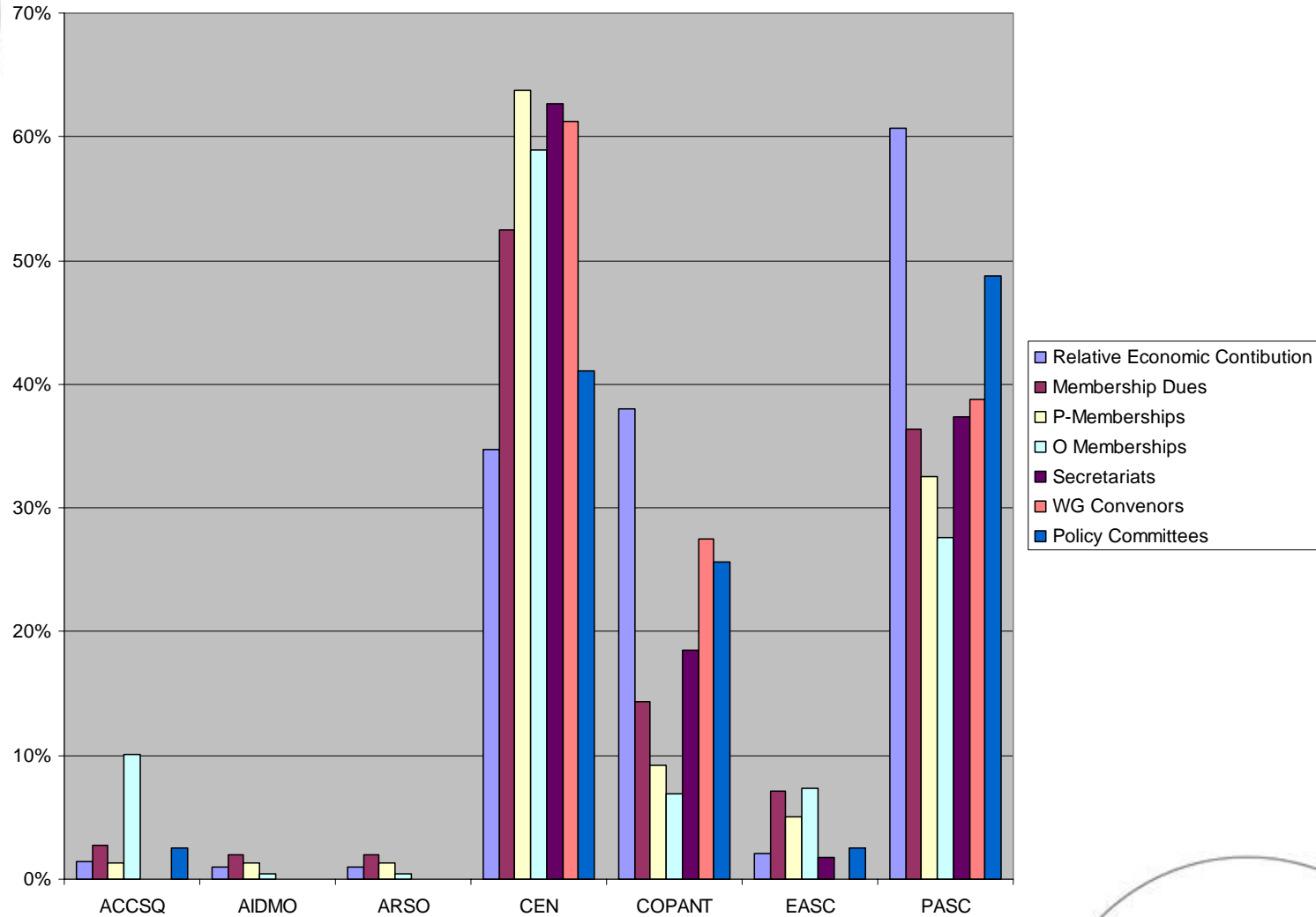


STANDARDS IN FOCUS



Standards Council of Canada
Conseil canadien des normes

IEC Regional Comparison



STANDARDS IN FOCUS



A Parting Note...

- We've added some pieces to the puzzle...