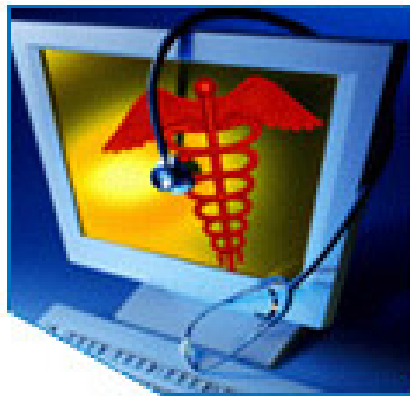


HITSP Project 2008 Work Plan and Schedule

Contract HHSP23320054103EC



Arlington, VA.
March 2008



HITSP 2008 TC Project Plan Overview

| TC | 2008 Use Case Work | 2006/2007 Carry-over Work |
|------------------------------------|--|--|
| Provider | <ul style="list-style-type: none"> ▶ Consultations and Transfer of Care ▶ Personalized Healthcare | <ul style="list-style-type: none"> ▶ IS01 Lab EHR ▶ IS04 Emergency Responder EHR ▶ IS07 Medication Management |
| Consumer | <ul style="list-style-type: none"> ▶ Remote Monitoring ▶ Patient Provider Secure Messaging | <ul style="list-style-type: none"> ▶ IS03 Consumer Access via Media ▶ IS05 Consumer Access via Network |
| Population | <ul style="list-style-type: none"> ▶ Public Health Case Reporting ▶ Immunization and Response Management | <ul style="list-style-type: none"> ▶ IS02 Biosurveillance ▶ IS06 Quality |
| Security, Privacy & Infrastructure | ▶ TBD | ▶ TN900 Security and Privacy and 19 existing constructs |
| Care Mgmt & Health Records | ▶ TBD | ▶ 15 existing constructs |
| Administrative and Finance | ▶ TBD | ▶ 3 existing constructs |

Domain TC Existing Constructs

Security Privacy & Infrastructure

C19 - Entity Identity Assertion
C25 - Anonymize
C26 - Nonrepudiation of Origin
T15 - Collect and Comm Security Audit Trail
T16 - Consistent Time
T17 - Secured Communication Channel
T24 - Pseudonymize
TP20 - Access Control
TP30 - Manage Consent Directives

C44 - Secure Web Connection
T29 - Notification of Document Availability
T31 - Document Reliable Interchange
T23 - Patient Demographics Query
T33 - Transfer of Documents on Media
TP13 - Manage Sharing of Documents
TP14 - Send Lab Result Message
TP21 - Query for Existing Data
TP22 - Patient ID Cross-Referencing
TP50 - Retrieve Form for Data Capture

Care Management & Health Records

C35 - Lab Result Terminology
C36 - Lab Result Message
C37 - Lab Report Document
T18 - View Lab Result From Web App
C39 - Encounter Message
C41 - Radiology Result Message
TP49 - Sharing Radiology Results
C48 - Encounter Document
C32 - Summary Docs Using CCD
C28 - Emergency Care Summary Document
C34 - Patient Level Quality Data Message
C38 - Patient Level Quality Data Document
T42 - Medication Dispensing Status
TP43 - Medication Orders

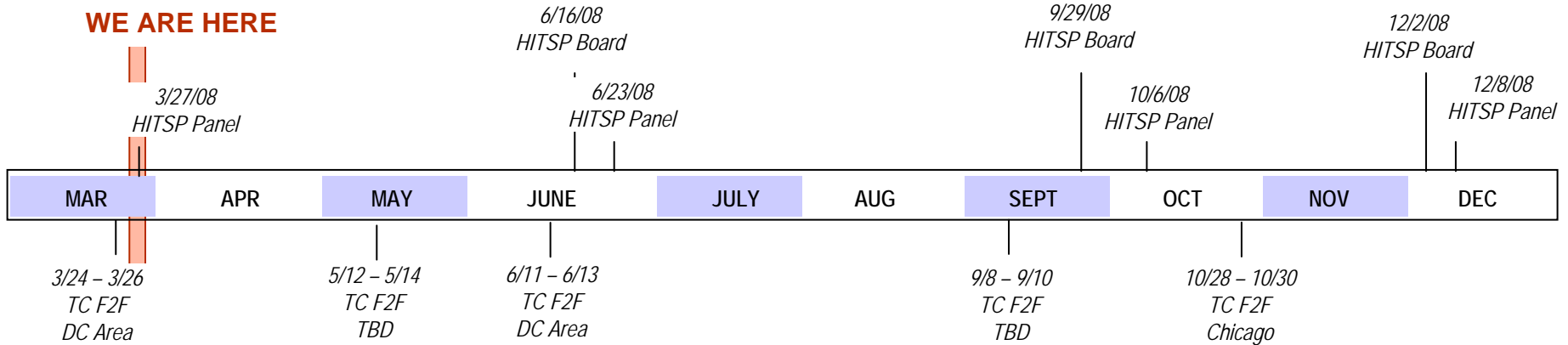
Administrative & Finance

C47 - Resource Utilization
T40 - Patient Eligibility Verification
TP46 - Medication Formulary and Benefits Information



HITSP 2008 TC Timeline Overview

WE ARE HERE



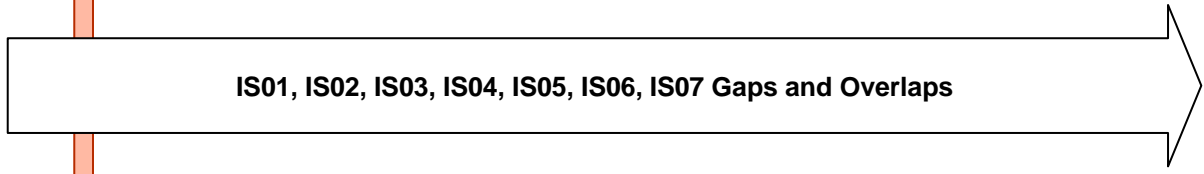
2008 Use Cases

Subject to change based on TC Project Plan



2006/2007 Carryover Work

TBD Based on TC Project Plan



Other



Tools to Support Project Planning

▶ Planning Worksheets

- Used by Perspective TCs to “hand-off” existing constructs to the Domain TCs
- Used by the Perspective TCs to “hand-off” planned work items (that do not have an existing constructs) to the Domain TCs
- Use by Domain TCs to analyze construct requirements

▶ Preliminary Project Plan Template

- Word document template that may be used by the TCs to document their plans for the new 2008 Use Cases



Preliminary Project Plan Template

- ▶ Use Case Description
- ▶ Proposed Approach
 - Scope for 2008
 - Opportunities for Reuse
 - Domain TC Support Required
- ▶ Proposed Timeline (Key Milestones)

