



HITSP

Healthcare Information Technology Standards Panel

HITSP Fundamental Concepts Internal Review Team (IRT) Report

22 Oct 08 | IRT Meeting

TC Members

Charles Parisot (co-chair)
Steve Hufnagel (co-chair)
David Tao
Durwin Day

Staff Members

Bob Yench
Ed Larsen
Gene Ginther
Jack Corley

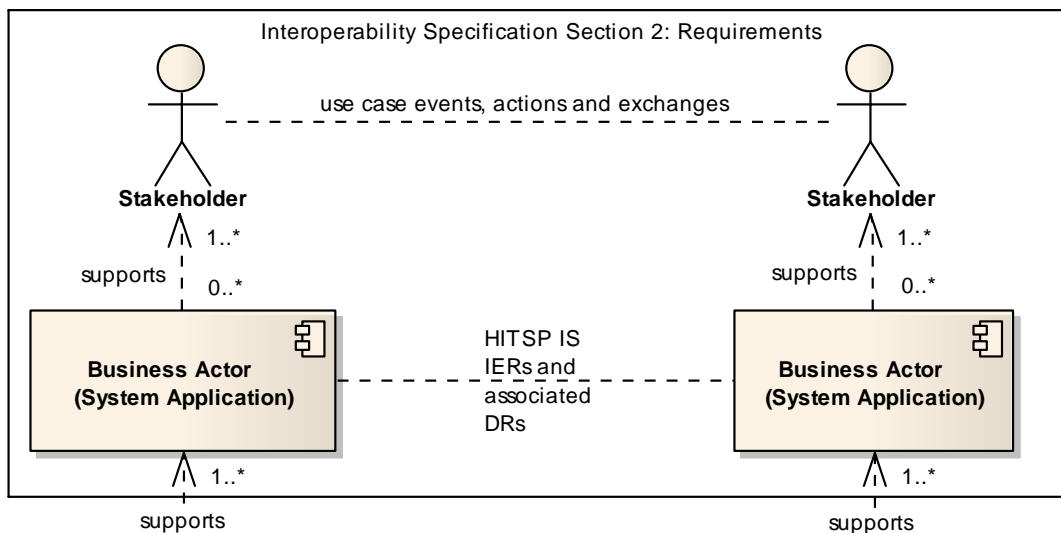
Fundamental Concepts

- ❑ **Stakeholder** - person, organization or “personified system” that performs actions in a use-case.
- ❑ **Business Actor** – an abstraction that is instantiated as an *IT system application* that a Stakeholder uses in the exchange of data needed to complete use case action(s); *a Business Actor is not a Stakeholder*.
- ❑ **Technical Actor** - the abstraction that is instantiated as an *IT system interface* that interacts with other Technical Actors. A Technical Actor supports the data exchanges for a Business Actor. The exchanges are defined by HITSP Transaction, Transaction Package, and Component constructs.
- ❑ **Information Exchange Requirement (IER)** - describes a requirement for information exchange between HITSP Business Actors. Data contents of such an exchange is defined by associated Data Requirements.
- ❑ **Data Requirement (DR)** – defines requirements for part or all of the content for a data exchange for one or more IERs as a set of information attributes with specific details for each attribute.

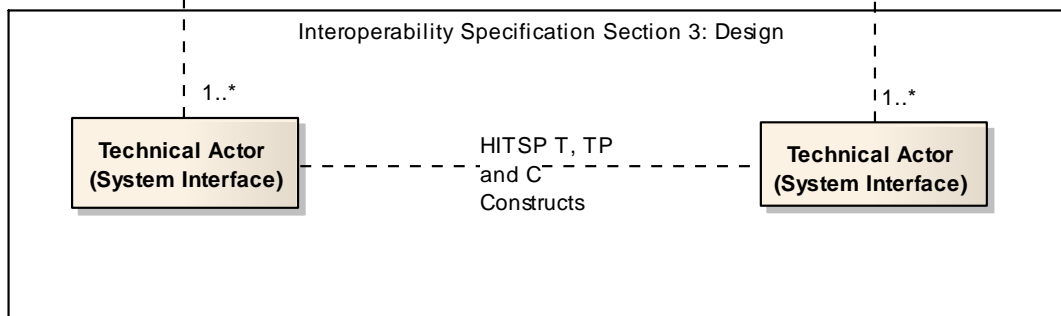
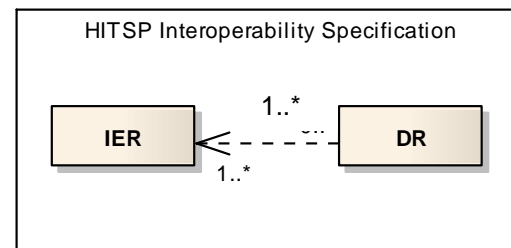


Fundamental Relationships

cmp Fundamental Relationships



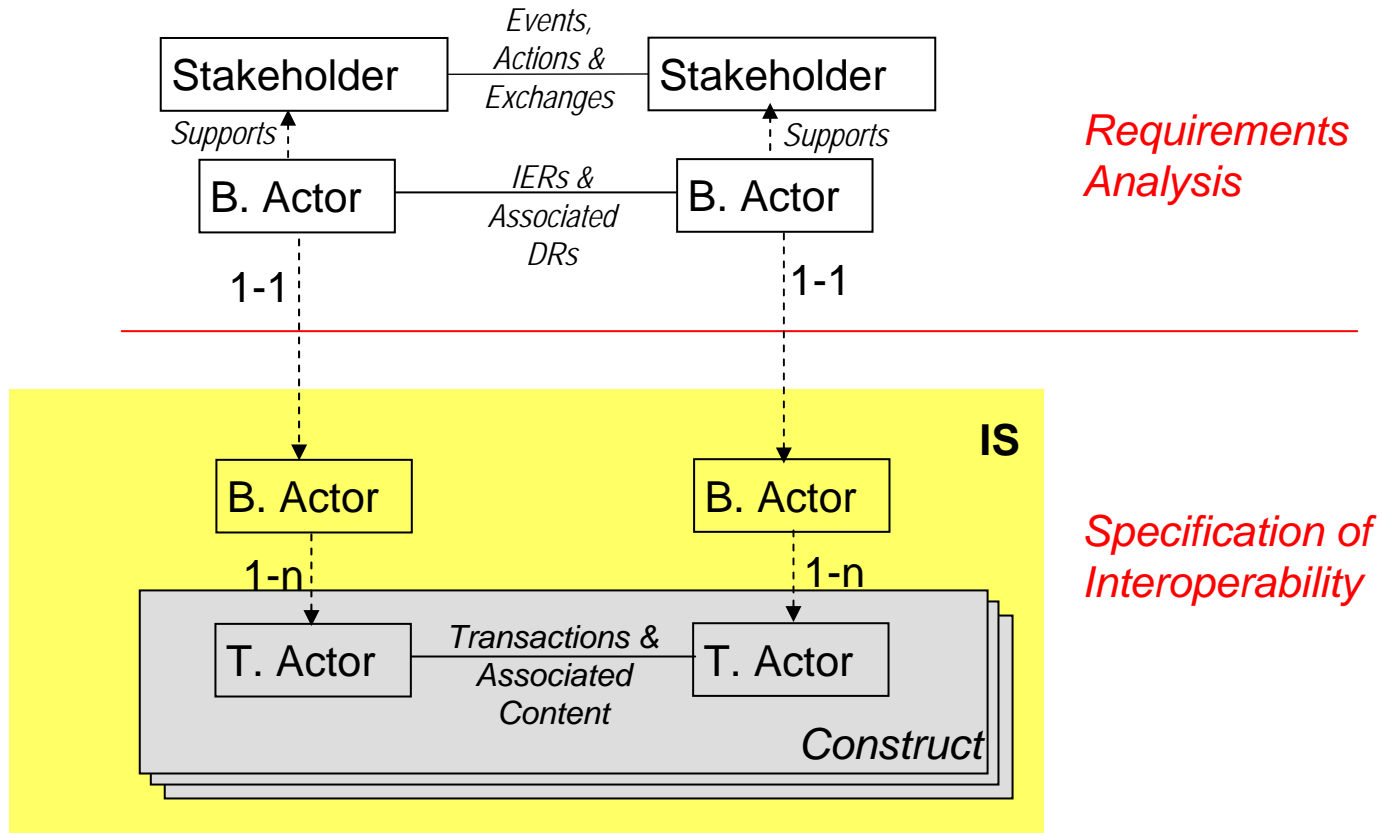
IER - Information Exchange Requirement
 DR - Data Requirement
 T - Transaction
 TP - Transaction Package
 C - Component



NOTE: Throughout the Transaction (and Transaction Package) Construct template, the term Transaction is used to refer to the Transaction construct. For example, in section 2.0 "Transactions are a logical grouping of actions, including necessary content and context that must all succeed or fail as a group" defines the transaction construct. In section 1.2, the Transaction construct result is an "information exchange" while in section 2.1, it is stated that this construct meets "interoperability requirements" and "supports a specific aspect of a real world business information interchange" while "Technical actors implement system data exchange".



Fundamental Relationships



- ❑ **Transaction** - a logical grouping of data exchanges and data exchange methods that must all succeed or fail as a group. A transaction is specified in a Transaction Construct.
- ❑ **Content** - data exchanged among HITSP Technical Actors. When specified separately, content is specified in Component Constructs.

