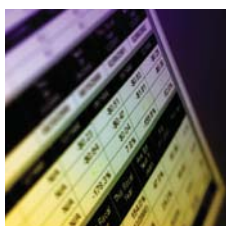
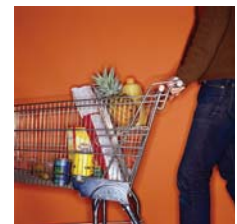
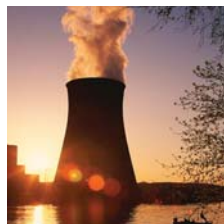
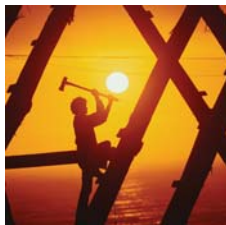


# A Value Proposition

THE BENEFITS OF ANSI MEMBERSHIP





---

**T**hank you for your interest in becoming a member of the American National Standards Institute (ANSI).

Collectively, the ANSI Federation represents more than 120,000 companies and well over 3.5 million professionals. Under the Institute's umbrella, this diverse constituency works together to strengthen the competitiveness of businesses operating in the global marketplace and to improve the quality of life for all citizens by developing, implementing, and promulgating voluntary consensus standards and related conformance assessment systems.

Active participation in ANSI and its programs can serve as both a strategic and tangible asset for your organization. Not only will you gain access to information and business intelligence that is not available elsewhere, but you will also receive discounts on many products and services. Equally important, you can build relationships that empower you with a voice and influence over the standardization and conformity assessment decisions that directly affect your business. As you know, having a seat at the table where the issues impacting your industry are being decided is extremely valuable.

Upon your review of the benefits of membership in ANSI, we are confident that you will agree that joining the Institute is a valuable and affordable investment.

Should you have any questions or require immediate information about the Institute or the voluntary consensus standards and conformity assessment system, please contact a member of ANSI membership development team (tel: 212.642.8922; e-mail: [membership@ansi.org](mailto:membership@ansi.org)) or visit our website at [www.ansi.org/membership](http://www.ansi.org/membership).

I look forward to welcoming you as a new member of the ANSI Federation!

S. Joe Bhatia  
ANSI President and CEO



## Member Categories

---

### Company Member

A corporation, partnership or other entity that is created under the laws of the United States or any State thereof and that is engaged in industrial or commercial enterprise or professional, educational, research, testing or trade activity. Any affiliate, division or joint venture of a corporation, company, firm or partnership may, at the discretion of the ANSI Board of Directors, be eligible for membership.

### Government Member

A department or agency of the United States government or of any state, interstate or regional authority or agency, or any local or county subdivision of such entities interested in the work of the Institute.

### Organizational Member

A not-for-profit scientific, technical, professional, labor, consumer, trade or other association or organization that is involved in standards, certification or related activities.

### Educational Member

A domestic, not-for-profit institution of higher learning, not otherwise eligible for membership, that is interested in the development of voluntary standards.

### International Member

An entity that is engaged in the activities of an organizational, company or educational member but that is not created under the laws of the United States or any state thereof. International members do not have voting rights.

### Individual Member

An individual member shall be a United States citizen interested in the development of standards or related activities, who is not eligible for membership under any other membership category. *(Restricted to one representative only.)*



## Member Forums

---

The Company, Organizational and Government Member Forums represent the voice of their respective membership segments in the Institute. They provide a forum for dialogue on global standards and conformity assessment issues and a unique opportunity to network with representatives of other ANSI members from a wide variety of industry sectors.

All ANSI members are automatically registered in the appropriate member forum.



## Member Benefits

---

### ANSI Reporter

Subscription to ANSI's quarterly news magazine discussing topics of interest to the global standards and conformity assessment community. ([www.ansi.org/reporter](http://www.ansi.org/reporter))

### What's New?

Subscription to ANSI's bi-weekly, electronic newsletter that keeps members up-to-date on the latest news, events and publications. ([www.ansi.org/news](http://www.ansi.org/news))

### Standards Tracking and Automated Reporting (STAR)

Single-user subscription to the Standards Tracking and Automated Reporting (STAR) Service, ANSI's automatic standards notification system. ([www.nssn.org](http://www.nssn.org))

### Publication Sales, eSubscriptions and Site Licensing Agreements

Discounts on many standards collections — including the International Organization for Standardization (ISO), the International Electrotechnical Commission (IEC) and select American National Standards (ANS) available via ANSI's eStandards Store. Members Only discounts also apply on eSubscriptions and site licensing agreements. ([webstore.ansi.org](http://webstore.ansi.org))

### Education and Training Services

ANSI provides a suite of educational products and training programs to meet the unique needs of the standards and conformity assessment community — programs for both newcomers and veterans alike. Members receive discounts on all instructor-led courses (open sessions or virtual workshops). ([www.ansi.org/education](http://www.ansi.org/education))

### Government Affairs and Public Policy Support

Public policy information and government affairs support is available to all ANSI members from the Institute's Washington, DC headquarters. Members are also invited to join the ANSI Caucus, an informal group that meets once a month in Washington, DC to network and discuss issues of common concern to those involved with standards. ([www.ansi.org/government](http://www.ansi.org/government))

### Membership on Governance and Policy Committees

All ANSI Full Members are invited to join in an annual recommendation of qualified candidates for the Institute's Board of Directors and for voting membership on the Institute's Policy Committees. ([www.ansi.org/about](http://www.ansi.org/about) — follow links to *Structure and Management* or *Organization Chart*)

#### — ANSI ISO Council (AIC)

The AIC is responsible for developing ANSI policy positions on issues exclusive to the International Organization for Standardization (ISO).

#### — United States National Committee of the IEC (USNC)

The USNC provides America's interface to the international electrotechnical community and is responsible for developing U.S. policy and technical positions on issues exclusive to the International Electrotechnical Commission (IEC).

#### — International Policy Committee (IPC)

The IPC is responsible for developing ANSI's broad-based policy and position decisions on regional and international standards, public policy and related issues that are not exclusively related to either ISO or IEC (e.g., International Telecommunication Union, World Trade Organization, etc.). The IPC is also responsible for decisions on issues that significantly impact or affect more than one international and/or regional standards body. The IPC typically meets twice a year.

#### — Regional Standing Committees

The three Regional Standing Committees (RSCs) are venues for the participation of ANSI members in policy position development regarding standards and conformity assessment activities in regional standards bodies. One RSC covers the Americas; another, the nations of the Asia-Pacific region; and the third encompasses Europe, the Middle East and Africa. Each RSC meets as necessary.

#### — National Policy Committee (NPC)

The NPC is responsible for broad-based policy and position decisions regarding national standards issues and government relations and public policy issues. This includes oversight of the ANSI Executive Standards Council (ExSC), the Board of Standards Review (BSR) and the Appeals Board. The NPC typically meets three times a year.

#### — Intellectual Property Rights Policy Committee (IPRPC)

The IPRPC is responsible for broad-based policy and position decisions regarding national, regional and international intellectual property matters, including the global trade and public policy aspects of such matters. It also develops Institute positions on the incorporation of essential patents or other proprietary intellectual property in standards, copyright protection and the exploitation of copyright.

#### — Conformity Assessment Policy Committee (CAPC)

The CAPC is responsible for broad-based policy and position decisions on national, regional and international conformity assessment issues. The CAPC oversees the International Conformity Assessment Committee (ICAC) as well as the accreditation committees that make decisions on ANSI's accreditation programs for certification bodies. The CAPC typically meets twice a year.



## **AMERICAN NATIONAL STANDARDS INSTITUTE**

ATTN: Membership  
25 West 43rd Street  
Fourth Floor  
New York, NY 10036  
T: 212.642.4900  
F: 212.398.0023

### **Operations**

1819 L Street, NW  
Sixth Floor  
Washington, DC 20036  
T: 202.293.8020  
F: 202.293.9287

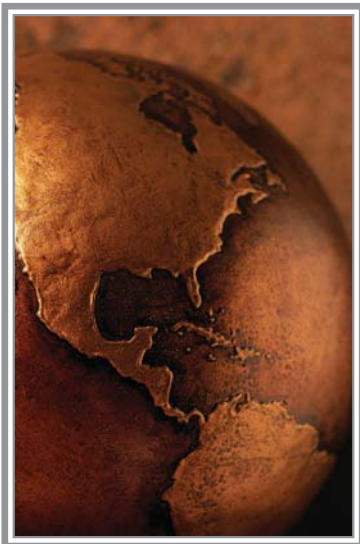
### **Headquarters**

[membership@ansi.org](mailto:membership@ansi.org)

### **E-mail**

[www.ansi.org/membership](http://www.ansi.org/membership)

### **On the Internet**



## **ANSI MISSION**

To enhance both the global competitiveness of U.S. business and the U.S. quality of life by promoting and facilitating voluntary consensus standards and conformity assessment systems, and safeguarding their integrity.