



WORLD
RESOURCES
INSTITUTE



Introduction to the Global Protocol for Community-scale Emissions

Presented by

Mary Sotos

Associate, GHG Protocol program

World Resources Institute

ANSI WORKSHOP: *Smart and Sustainable Cities*

November 21, 2013

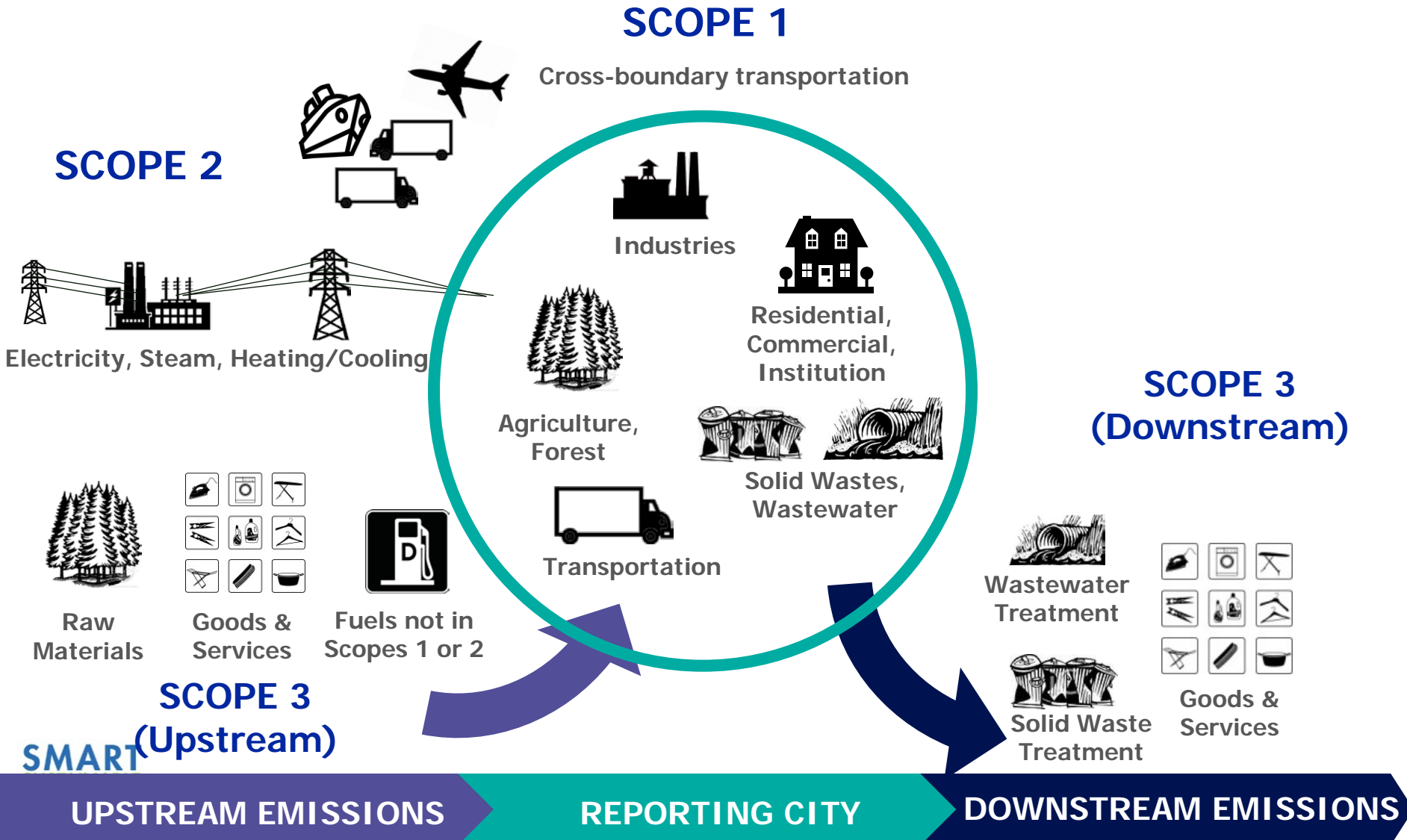
Overview

□ Agenda

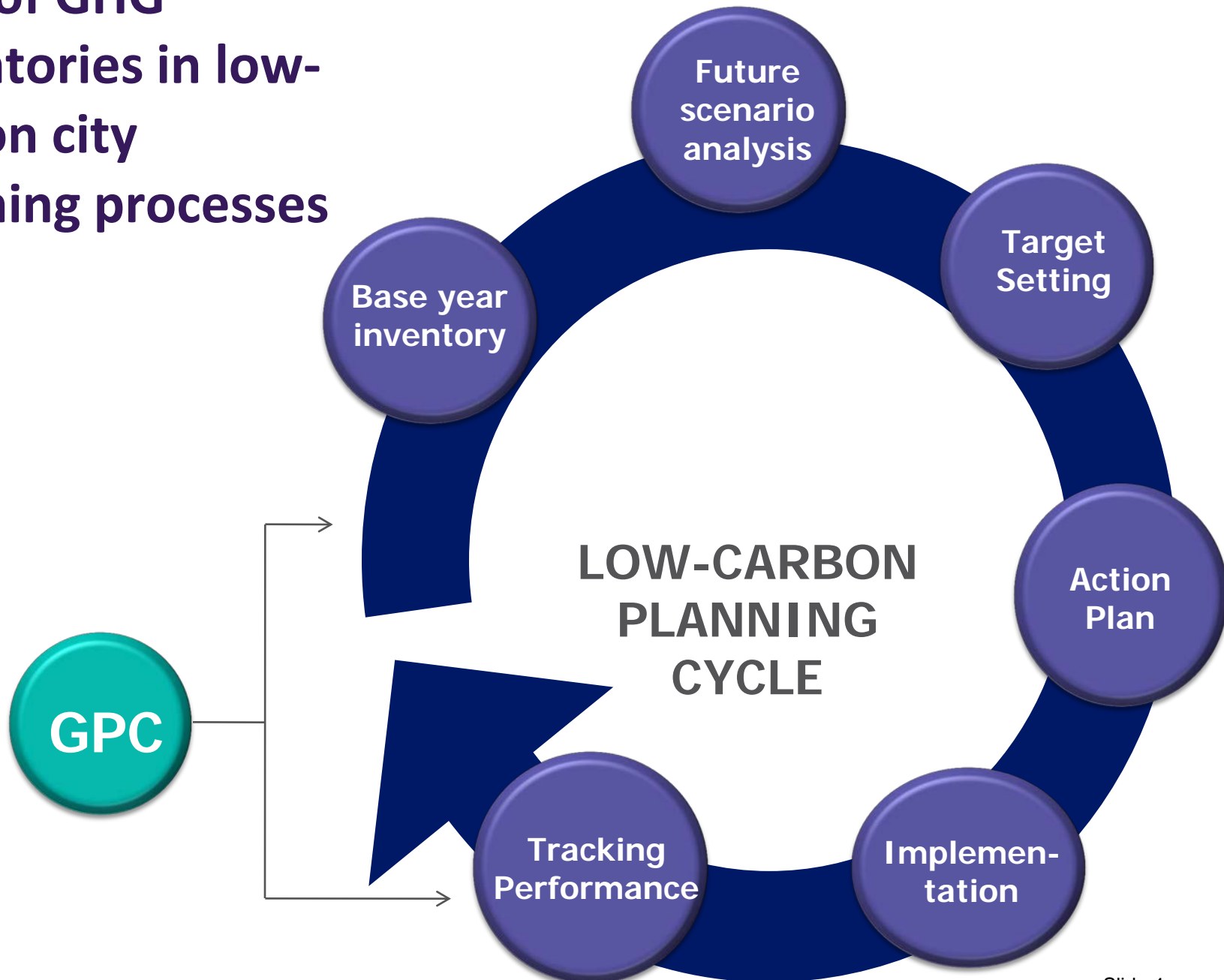
- GHG emissions in a city
- Role of GHG inventories
- Issues with existing accounting practices
- GPC pilot project
- Next steps



GHG emissions in a city



Role of GHG inventories in low-carbon city planning processes



Issues in
the
existing
accounting
practices

1

Inconsistent

2

Unclear boundary definition

3

Incomplete

4

Double counting

Core Partners



WORLD
RESOURCES
INSTITUTE

30 years experience in promoting sustainability worldwide

14 years of GHG accounting standard development experience



Represent **>60** largest cities from around the world committed to implementing meaningful and sustainable climate-related actions



Represent **>1200** local government members worldwide

Over **20** years experience in addressing urban sustainability issues



The GPC Pilot Version 1.0

Global Protocol for Community-Scale GHG Emissions (GPC)

Pilot Version 1.0 – May 2012

GLOBAL PROTOCOL
FOR COMMUNITY-SCALE
GREENHOUSE GAS EMISSIONS
(GPC)

Pilot Version 1.0 – May 2012

C4O
CITIES

ICLEI
Local
Governments
for Sustainability

WORLD
RESOURCES
INSTITUTE



The “GPC Pilot Version 1.0”
was released on May 14, 2012



Supporting Partners



UN Environment Programme, UN Habitat, World Bank Recognize New Global Protocol for Urban GHG Emissions, Encourage its Use

SUBMITTED BY **DAN HOORNWEG** ON MON, 2012-05-14 14:54

In March this year, we posted a **blog** on the **draft** edition of a global protocol for city-scale GHG emissions, announced jointly by ICLEI – Local Governments for Sustainability, C40, and the World Resources Institute (WRI).

Yesterday, a pilot version of the protocol was released at the UNFCCC climate meetings in Bonn, Germany. And today, UNEP, UN-Habitat and the World Bank expressed appreciation to ICLEI – Local Governments for Sustainability, C40, and WRI for this accomplishment. To learn more about the significance of the protocol, read **this** news feature.

Moving forward, C40, ICLEI, and WRI will incorporate the pilot test's results and expand the protocol into a more comprehensive GHG accounting standard for community-scale emissions. This will enable local governments to account for how demand for goods and services as well as local innovative technologies can impact a GHG footprint.

I didn't make it to Bonn for the release event but Anthony Bigio from the World Bank's Urban Anchor was there. Check out the World Bank's press release below:

May 15—Two UN agencies and the World Bank today expressed appreciation at the launch of a pilot version of a **Global Protocol for Community-scale Greenhouse Gas Emissions**, designed to harmonize emissions measurement and reporting process for the world's cities. The protocol was released at the UNFCCC climate meetings in Bonn by **C40 Cities Climate Leadership Group** and **ICLEI – Local Governments for Sustainability**, with input from the **World Resources Institute**.



<http://blogs.worldbank.org/sustainablecities/ghg-protocol>

Overview Reporting Framework

Current Pilot Project

Sources	Scope 1	Scope 2	Scope 3	
	Basic		Basic+	Expanded
STATIONARY UNITS				
Residential Buildings	X	X		
Commercial/Institutional Facilities	X	X		
Energy Generation*	X	X		
Industrial Energy Use	X	X		
Fugitive Emissions	X	X		
MOBILE UNITS				
On-Road Transportation	X	X		X
Railways	X	X		X
Water-Borne Navigation	X	X		X
Aviation	X			X
Off-Road	X	X		
WASTE				
Solid Waste Disposal	X		X	
Biological Treatment of Waste	X		X	
Incineration and open burning	X		X	
Wastewater Treatment and discharge	X		X	
INDUSTRIAL PROCESSES AND PRODUCT USE (IPPU)				
X				
AGRICULTURE, FORESTRY, AND LAND USE (AFOLU)				
X				
OTHER INDIRECT EMISSIONS				
X				
TOTAL BY SCOPE	SCOPE 1	SCOPE 2	SCOPE 3	
TOTAL BY SOURCE	BASIC		BASIC+	
			EXPANDED	

Pilot Projects



35+ Cities
May-Dec 2013



Next Steps

- External Review** – spring 2014
- Expanded version (Value Chain) scoping* – winter/spring 2014
- Final publication** – fall 2014



Thank you!

- ❑ Mary Sotos, World Resources Institute (DC)
 - Mary.Sotos@wri.org
- ❑ Fong Wee Kean, World Resources Institute (Beijing)
 - Wfong@wri.org
- ❑ Seth Schultz, C40 (New York)
 - sschultz@c40.org
- ❑ Yunus Arikan, ICLEI (Bonn, Germany)
 - Yunus.arikan@iclei.org

