



ANSI Energy Efficiency Standardization Coordination Collaborative (EESCC)

Working Group 1: Building Energy and Water Assessment Standards

Inaugural Plenary Status Report

January 22-23, 2013 | Arlington, VA



ANSI EESCC Working Group 1



Co-Chairs

- **Pete DeMarco**
Senior Director of Special Programs
IAPMO
- **Stephanie Reiniche**
Manger of Standards
ASHRAE

ANSI EESCC

Working Group 1 - Scope



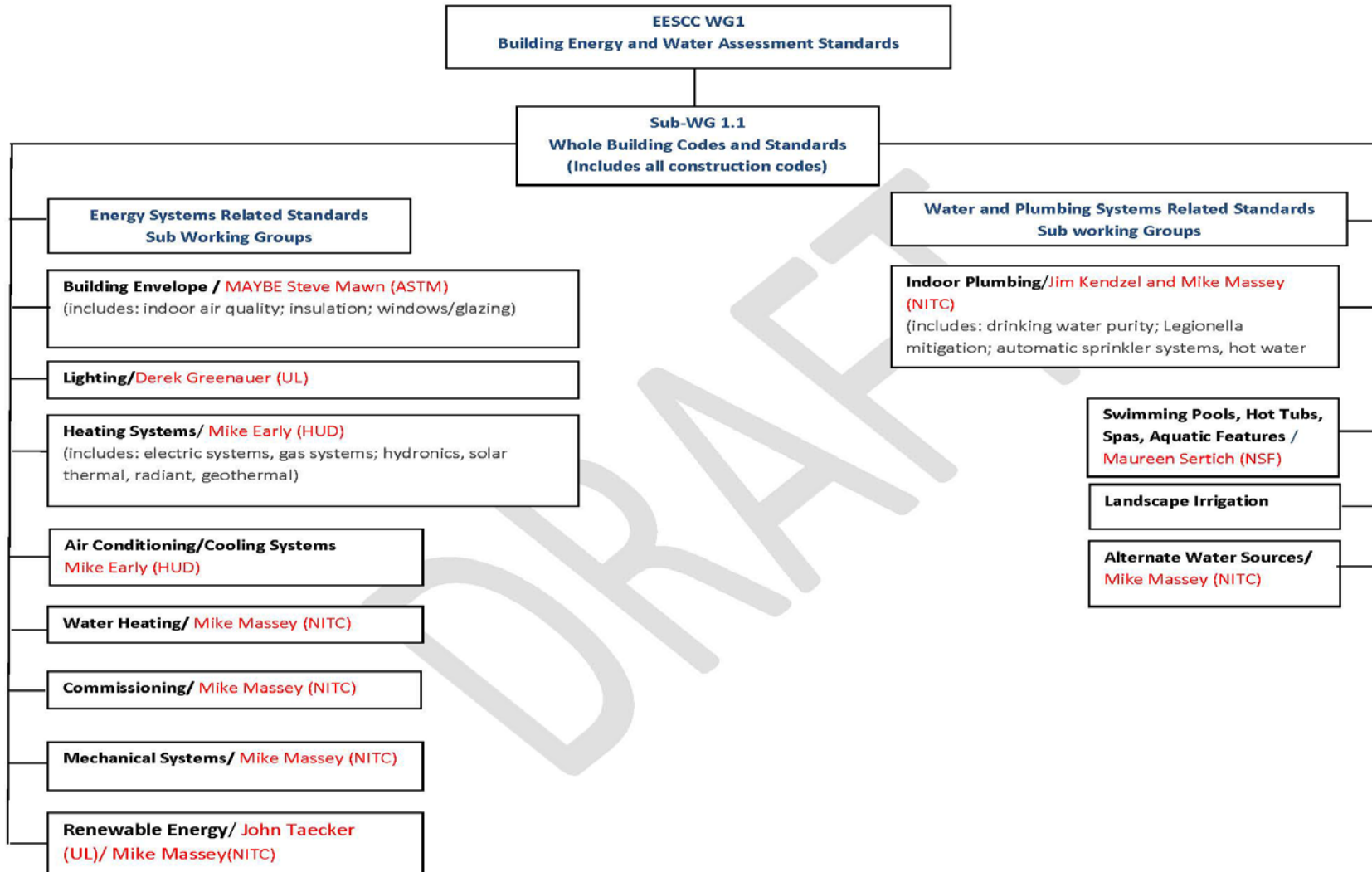
Initial Scope

- Building energy and water assessment standards (including diagnostic test procedures and health and safety testing)
- An initial organizational chart has been developed to help outline the sub-issue areas that need to be addressed (see next slide)

Sub-Issues/Issue Leads

- Issue leads have been identified for several of these areas; participants have been asked to provide further input on the sub-issue areas and identify areas they would like to take the lead on
- Roles of issue leaders includes making sure the EESCC inventory is capturing the data that is needed, and reaching out to relevant organizations as necessary to encourage further input

ANSI EESCC WG1 - Structure/Sub-Issues



ANSI EESCC WG1



Questions for the plenary:

- To what extent should health and safety issues be addressed?
- Clarity on types of standards included in database:
 - to what extent, if any, should the EESCC consider product standards for emerging technologies that are not already referenced in existing codes?
- Water and wastewater treatment - to include or not to include



for more information

American National Standards Institute

Headquarters

1899 L Street, NW
11th Floor
Washington, DC 20036

T: 202.293.8020

F: 202.293.9287

New York Office

25 West 43rd Street
4th Floor
New York, NY 10036

T: 212.642.4900

F: 212.398.0023

Jana Zabinski
Program Manager,
ANSI EESCC
jzabinski@ansi.org
212.642.8901

www.ansi.org
webstore.ansi.org
www.nssn.org

